



da Gama
TEXTILES

THREE CATS

REG[®] TRADE MARK



1 c/w 01,03,04



112 c/w 04



121 c/w 01,04



316 c/w 04



317 c/w 01,04



332 c/w 04



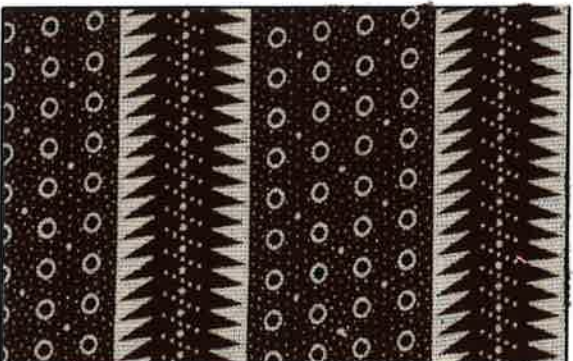
455 c/w 01,03,04



459 c/w 04



649 c/w 01,03,04



681 c/w 01,04



715 c/w 01



788 c/w 04



842 c/w 04



843 c/w 01



2148 c/w 01,03,04



2267 c/w 01,04



2315 c/w 01,04



2375 c/w 01,03,04

c/w 01 = choc, c/w 03 = red, c/w 04 = indigo

pg. 1



da Gama
TEXTILES

THREE CATS

REG. TRADE MARK



2532 c/w 01,04



2546 01,04



2564 c/w 04



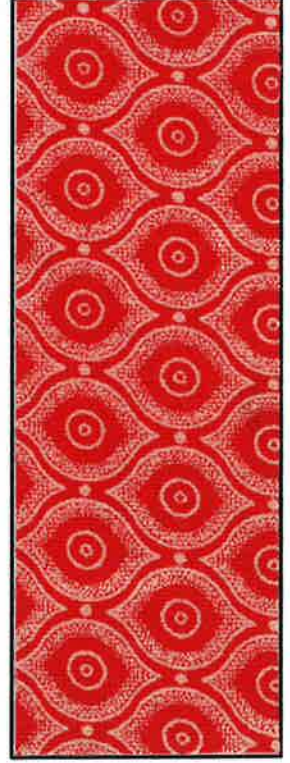
A1240 c/w 01,03,04



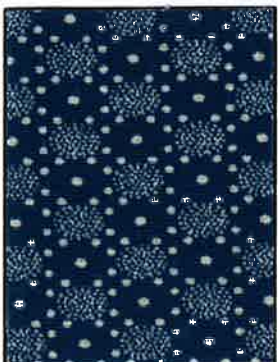
A3377 c/w 01,04



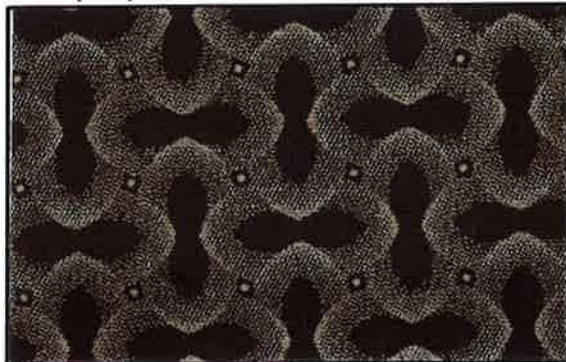
H0283 c/w 01



H0468 c/w 01,03,04



H0644 c/w 01,04



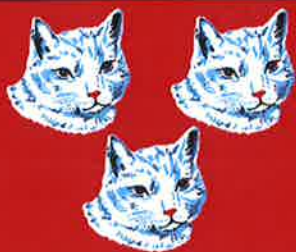
H0873 c/w 01,04



H0875 c/w 01,04



H0876 c/w 04



da Gama
TEXTILES

THREE CATS

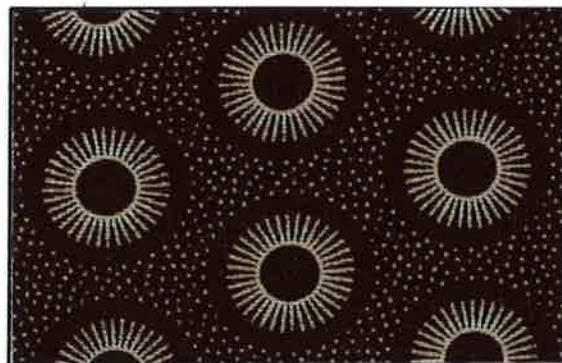
REG[®] TRADE MARK



H0913 c/w 04



H0940 c/w 01,03,04



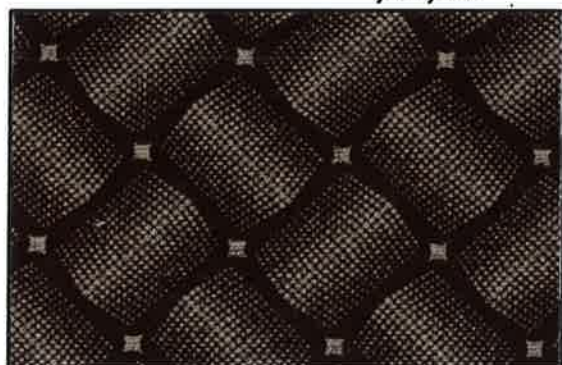
H0945 c/w 01,03,04



H0984 c/w 01,04



H1044 c/w 01,04



H1099 c/w 01,04



H1100 c/w 01,04



H1102 c/w 01,04



H1214 c/w 01, 04



H1215 c/w 01, 04



da Gama
TEXTILES

THREE CATS

REG^o TRADE MARK



H1217 c/w 01,04



H1218 c/w 01,04



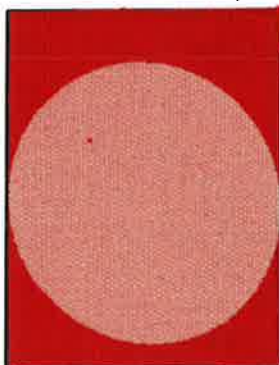
H1220 c/w 01,04



H1221 c/w 01,04



H1222 c/w 01,04



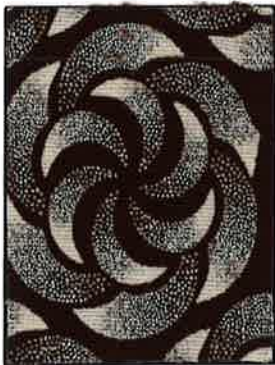
H1237 c/w 01,03,04



H1260 c/w 01,04



H1277 c/w 01,04



H1278 c/w 01,04



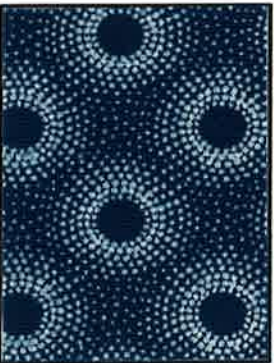
XA0090 c/w 03,04



XA0530 c/w 01,03,04



XB7525 c/w 01,03,04



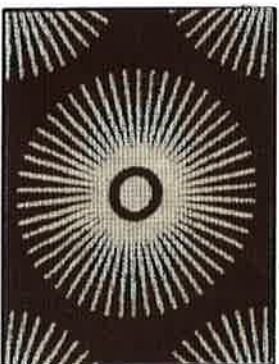
XB8858 c/w 04



XB8859 c/w 01,03,04



XB9706 c/w 01,04



XB9846 c/w 01,04



XH0053 c/w 01,03,04



XH0150 c/w 01,03,04



XH0153 c/w 01,03,04

c/w 01 = choc, c/w 03 = red, c/w 04 = indigo

pg. 4



da Gama
TEXTILES

THREE CATS

REG^o TRADE MARK



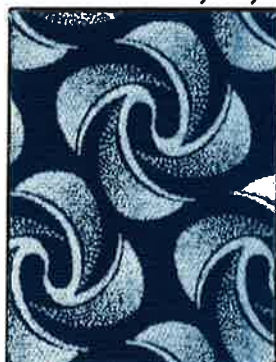
XH0449 c/w 01,04 **XH0738 c/w 01** **XH0739 c/w 01,03,04** **XH0805 c/w 03** **XH0841 c/w 01,04**



XH0868 c/w 01,03,04 **XH0901 c/w 01,04** **XH0902 c/w 01,04** **XH0906 c/w 01,04**



XH0970 c/w 01,03,04



XH0977 c/w 01,03,04

XH1009 c/w 01,03,04

XH1011 c/w 01,04

c/w 01 = choc, c/w 03 = red, c/w 04 = indigo

pg. 5



da Gama
TEXTILES

THREE CATS

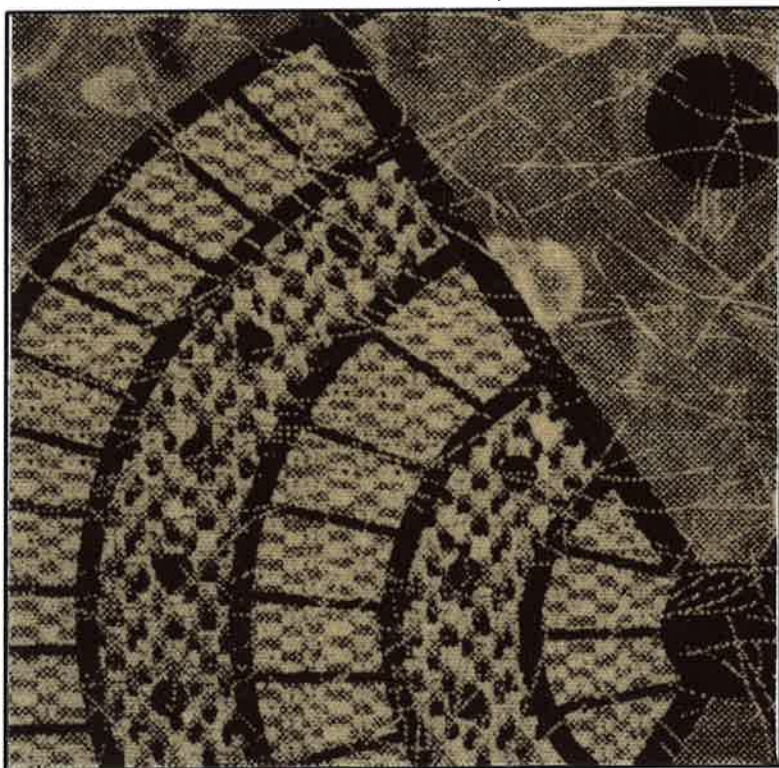
REG[®] TRADE MARK



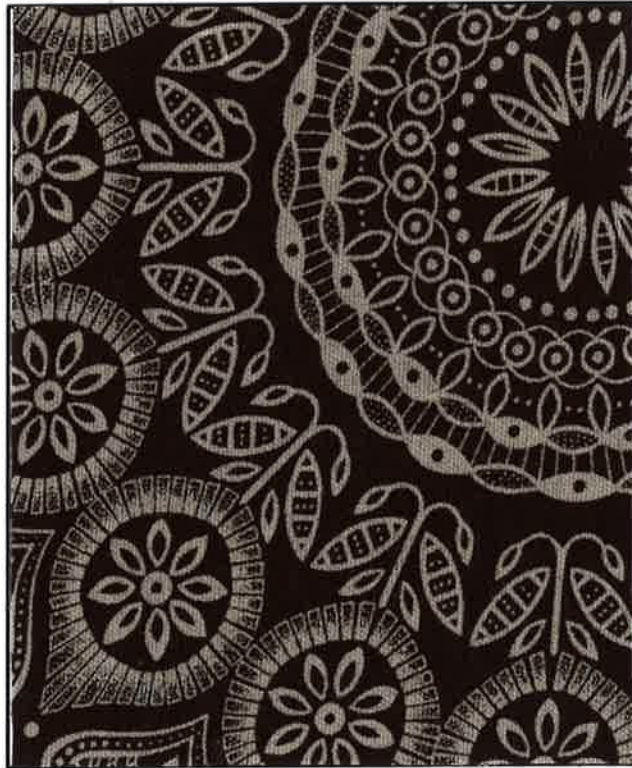
XH1129 c/w 01, 04



XH1134 c/w 01



XH1140 c/w 01



XH1185 c/w 01, 04

c/w 01 = choc, c/w 03 = red, c/w 04 = indigo



da Gama
TEXTILES

THREE CATS

REG^o TRADE MARK



2377 c/w 01



A3377 c/w 05



A3381 c/w 05



A3382 c/w 05



A4143 c/w 01



A8923 c/w 01



B0559 c/w 01



B7693 c/w 01



B9529 c/w 01



B9532 c/w 01

c/w 01 = choc gold (2 colour)



da Gama
TEXTILES

THREE CATS

REG[®] TRADE MARK



H0304 c/w 01



H0399 c/w 01



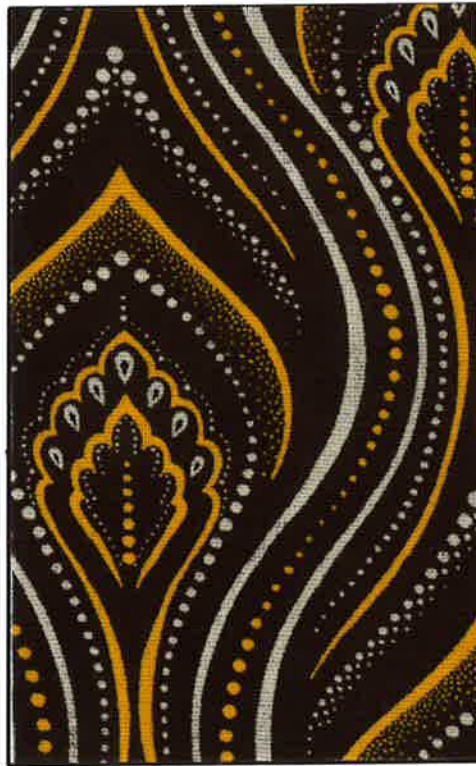
H0767 c/w 01



H0824 c/w 01



H0851 c/w 01



H0852 c/w 01



H0856 c/w 01



H0963 c/w 01



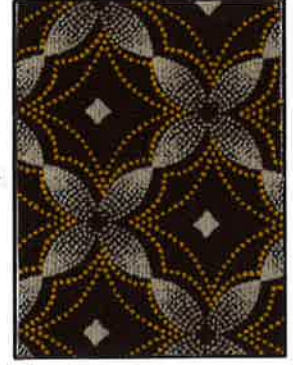
H0967 c/w 01



H0985 c/w 01



H1112 c/w 01



H1113 c/w 01

c/w 01 = choc gold (2 colour)



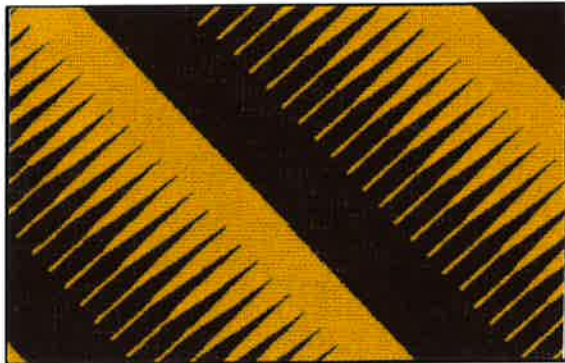
da Gama
TEXTILES

THREE CATS

REG[®] TRADE MARK



H1119 c/w 01



XA0109 c/w 05



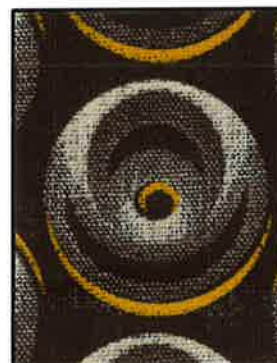
XB5835 c/w 01



XB7692 c/w 01



XB8897 c/w 01



XB9488 c/w 01



XB9489 c/w 01



XB9491 c/w 01



XB9596 c/w 01



XB9840 c/w 01

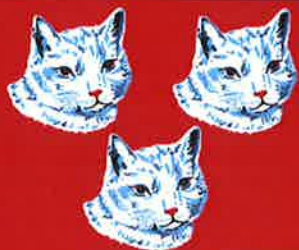


XB9842 c/w 01



XH0147 c/w 01

c/w 01 = choc gold (2 colour)



da Gama
TEXTILES

THREE CATS

REG[®] TRADE MARK



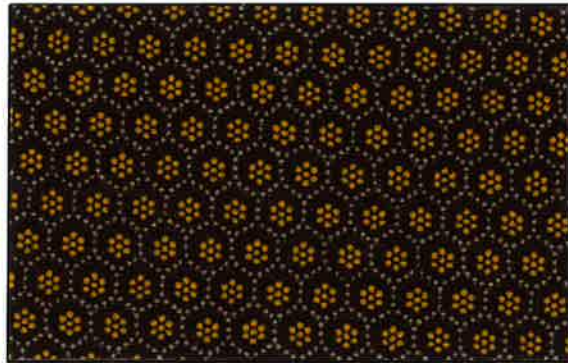
XH0167 c/w 01



XH0183 c/w 01



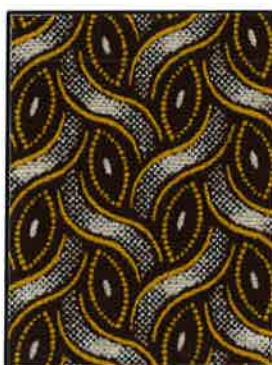
XH0195 c/w 01



XH0500 c/w 01



XH0527 c/w 01



XH0870 c/w 01



XH0904 c/w 01



XH0971 c/w 01



XH1010 c/w 01



XH1049 c/w 01

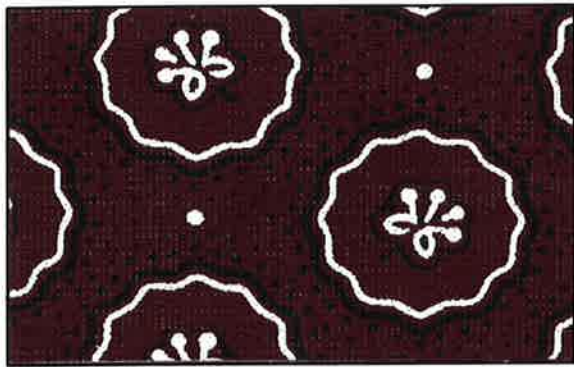
c/w 01 = choc gold (2 colour)



da Gama
TEXTILES

THREE CATS

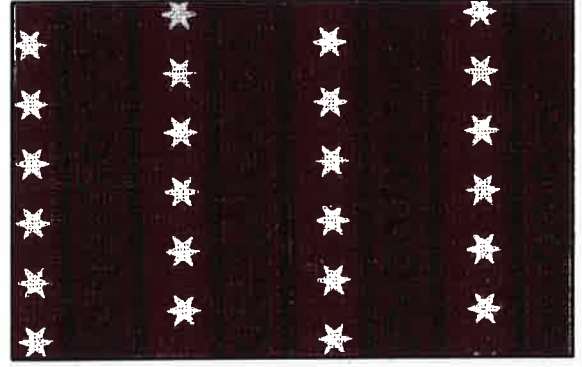
REG^o TRADE MARK



A0306 c/w 01



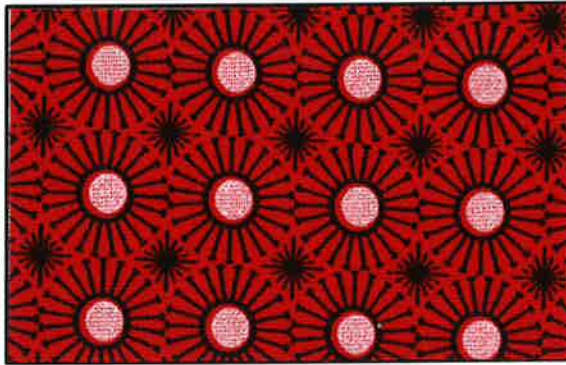
A3668 c/w 03



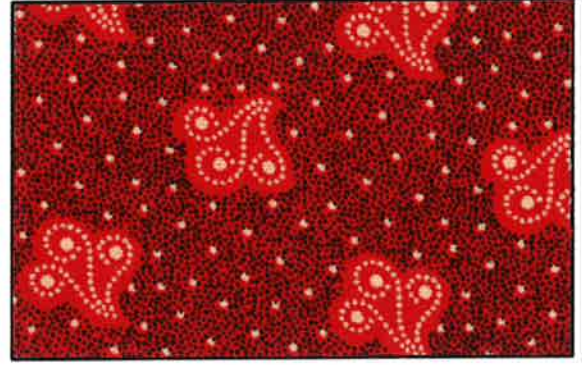
A6780 c/w01



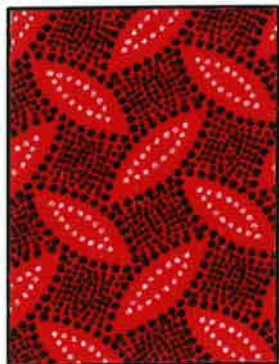
A6784 c/w 03



B0028 c/w 03



B9893 c/w 03



H0074 c/w 03



H0076 c/w 03



H0302 c/w 03



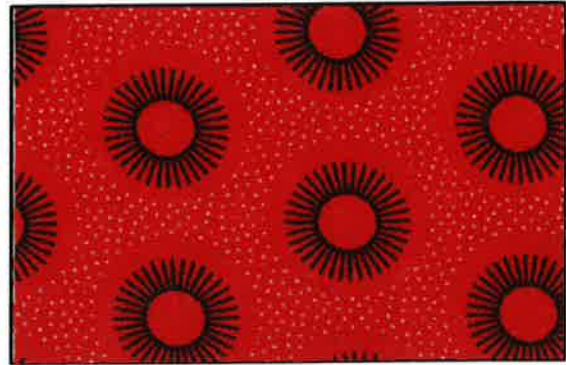
H0304 c/w 03



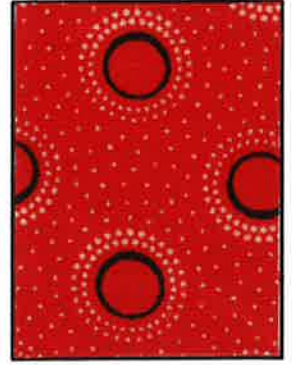
H0399 c/w 03



H0767 c/w 03



H0963 c/w 03



H0967 c/w 03

c/w 03 = red – black 2 colour

pg. 11



da Gama
TEXTILES

THREE CATS

REG[®] TRADE MARK



H1113 c/w 03



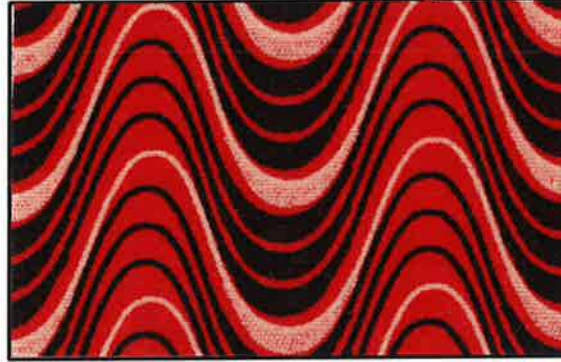
H1119 c/w 03



XB8897 c/w 03



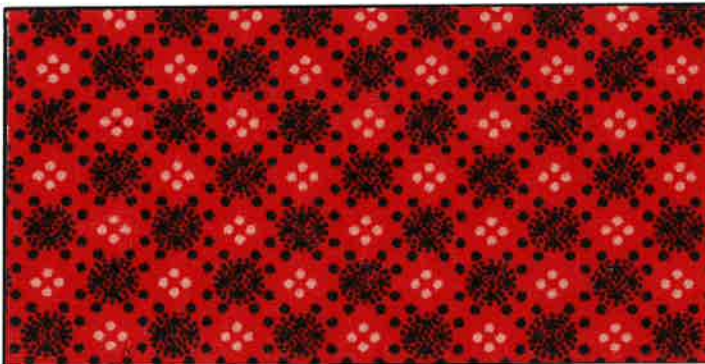
XB9596 c/w 03



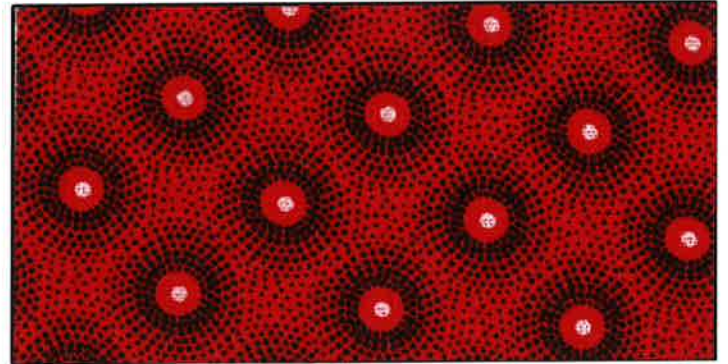
XB9705 c/w 03



XB9840 c/w 03



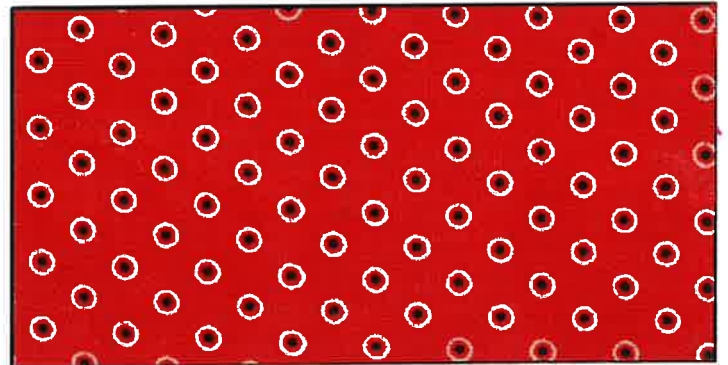
XB9842 c/w 03



XH0058 c/w 03

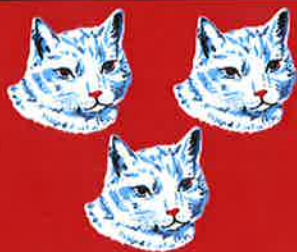


XH0147 c/w 03



XH0167 c/w 03

c/w 03 = red – black 2 colour



da Gama
TEXTILES

THREE CATS

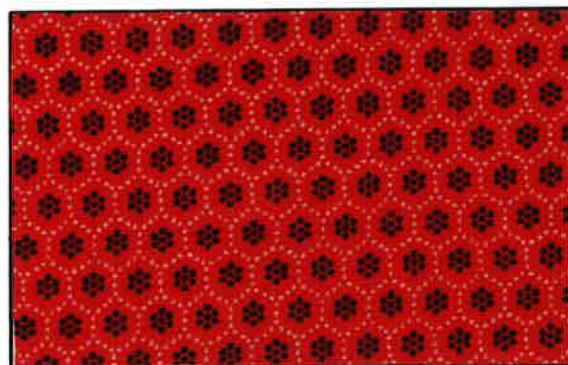
REG^d TRADE MARK



XH0183 c/w 03



XH0195 c/w 03



XH0500 c/w 03



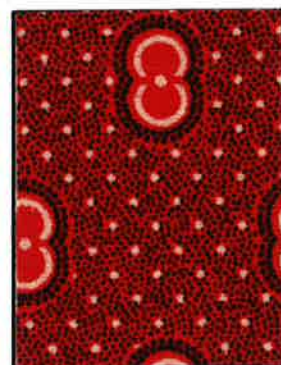
XH0528 c/w 03



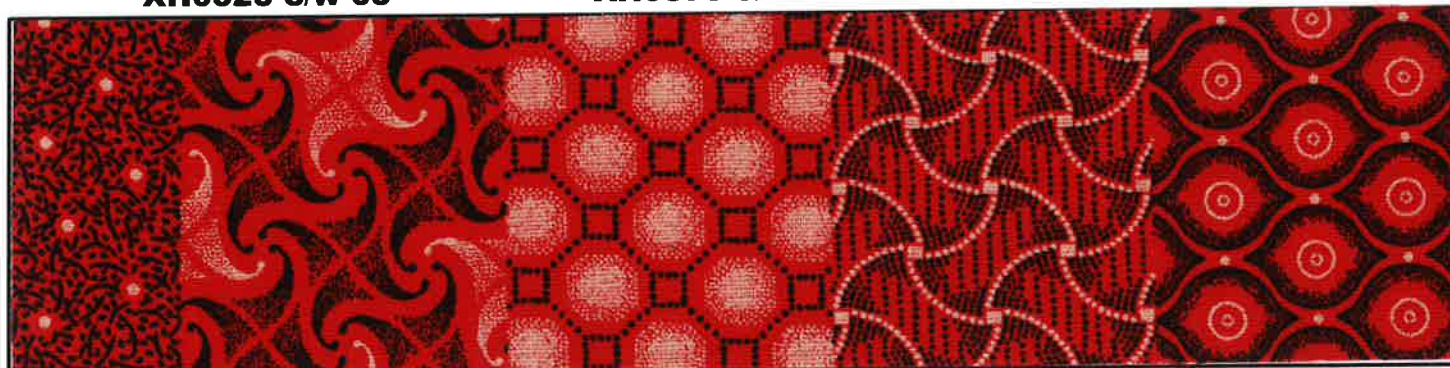
XH0870 c/w 03



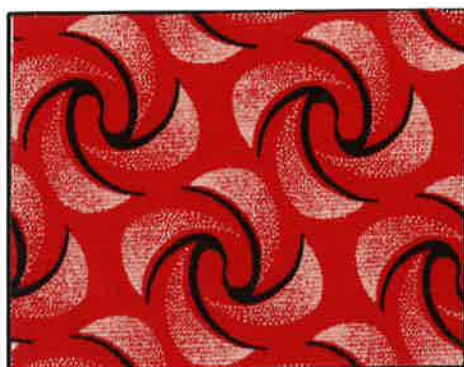
XH0904 c/w 03



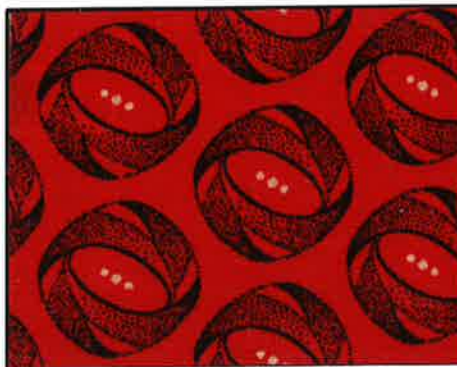
XH0929 c/w 03



XH0971 c/w 03



XH1010 c/w 03

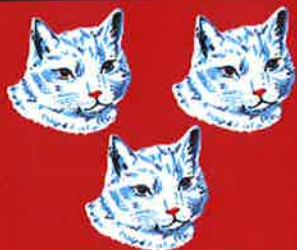


XH1012 c/w 03



XH1049 c/w 03

c/w 03 = red – black 2 colour



da Gama
TEXTILES

THREE CATS

REG. TRADE MARK



B0028 c/w 16



B9529 c/w 16



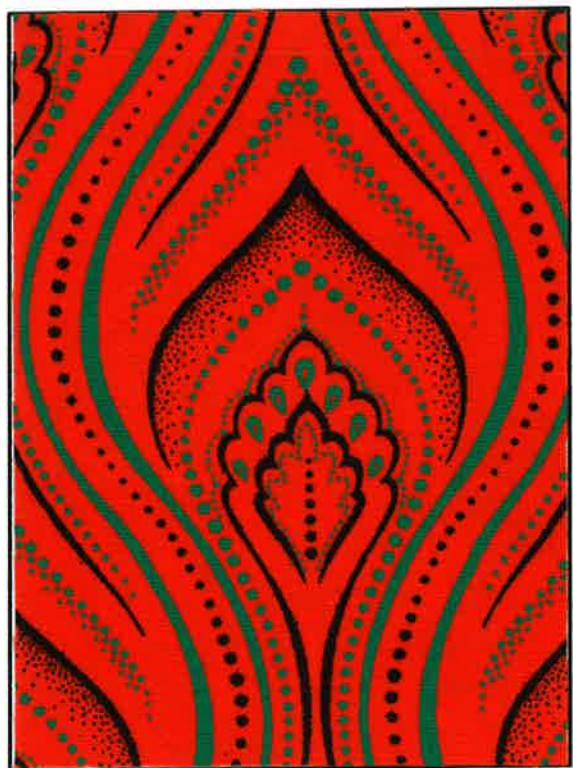
H0302 c/w 16



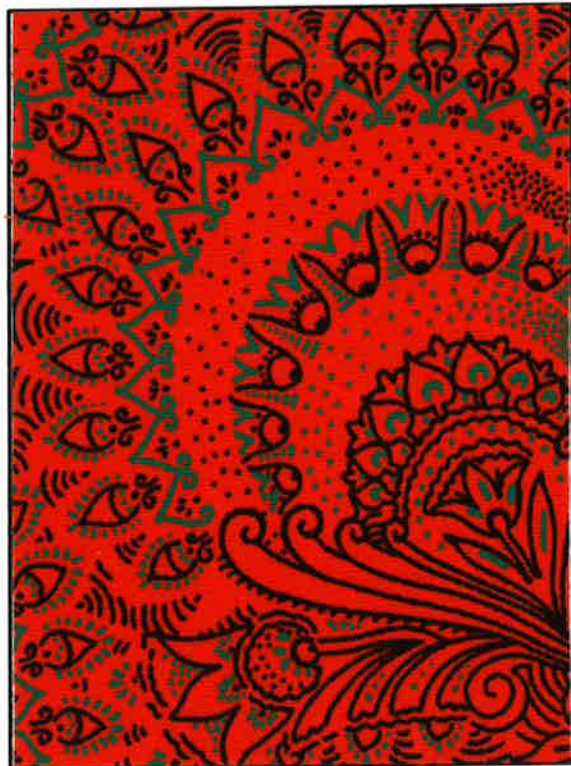
H0399 c/w 16



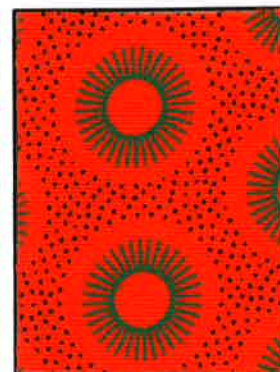
H0767 c/w 16



H0852 c/w 16



H0856 c/w 16



H0963 c/w 16



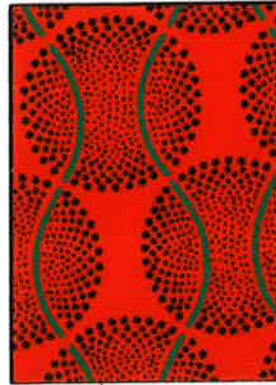
H0967 c/w 16



H1110 c/w 16



H1111 c/w 16



H1112 c/w 16



H1113 c/w 16



H1119 c/w 16



XB9840 c/w 16

c/w 16 = orange, jade & black



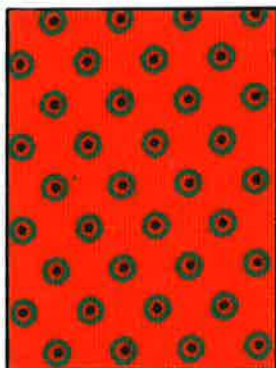
da Gama
TEXTILES

THREE CATS

REG[®] TRADE MARK



XH0147 c/w 16



XH0167 c/w 16



XH0195 c/w 16



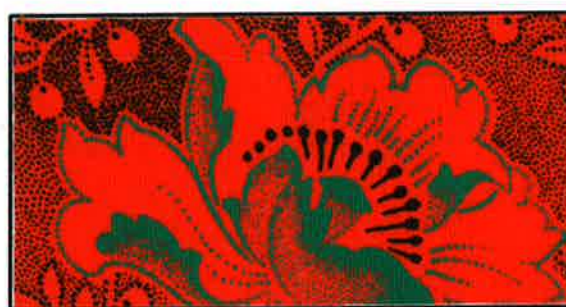
XH0500 c/w 16



XH0514 c/w 16



XH0527 c/w 16



XH0528 c/w 16



XH0703 c/w 16



XH0840 c/w 16



XH0870 c/w 16



XH0904 c/w 16



XH1010 c/w 16



XH1049 c/w 16

c/w 16 = orange, jade & black

pg. 15



da Gama
TEXTILES

THREE CATS

REGD. TRADE MARK



B9532 19



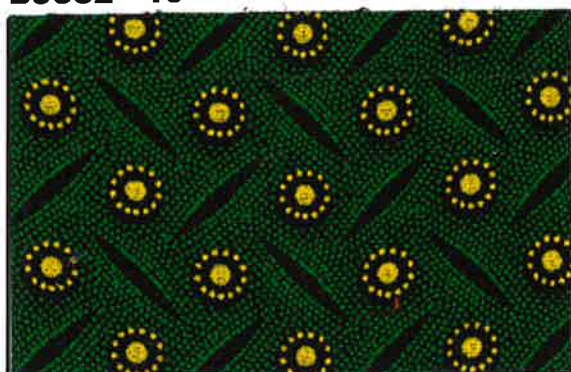
H0304 19



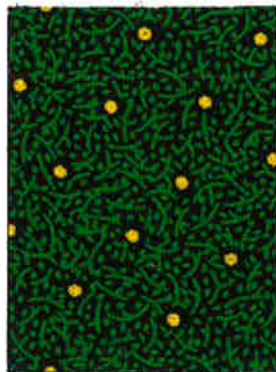
H0399 19



H0767 19



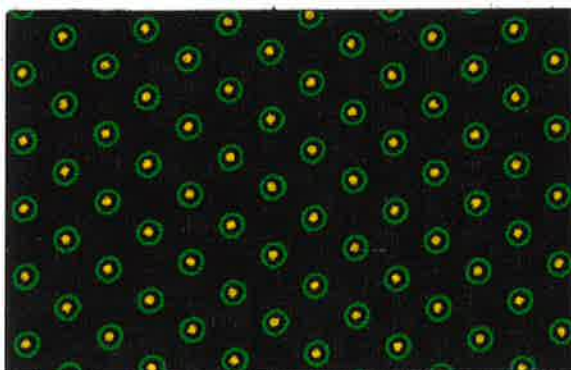
XB9596 19



XB9840 19



XH0147 19



XH0167 19



XH0516 19



XH0870 19



XH0904 19

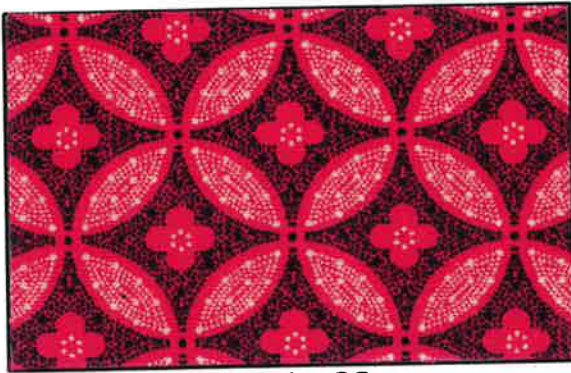
c/w 19 = green, yellow & black



da Gama
TEXTILES

THREE CATS

REG[®] TRADE MARK



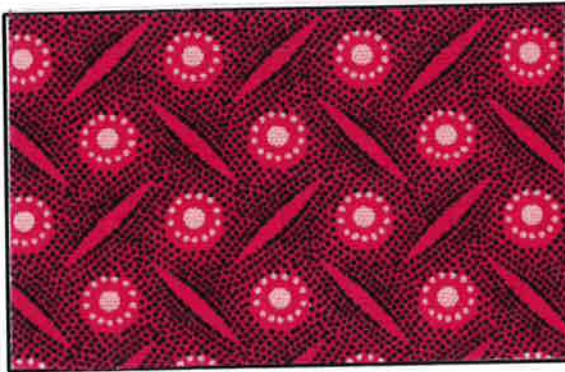
H0304 c/w 22



H0399 c/w 22



H0767 c/w 22



XB9596 c/w 22



XB9840 c/w 22



XH0147 c/w 22



XH0153 c/w 22



XH0167 c/w 22



XH0183 c/w 22



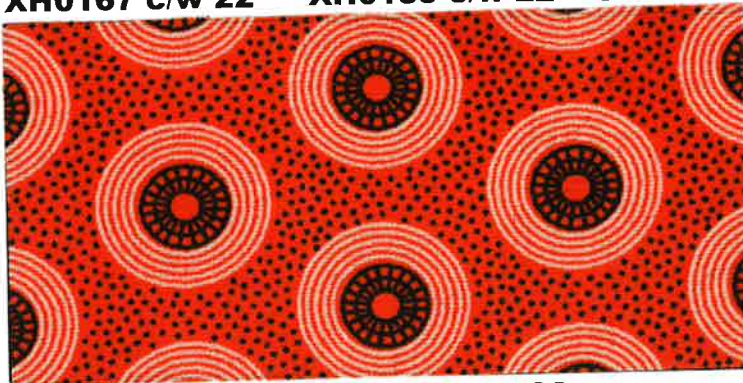
XH0870 c/w 22



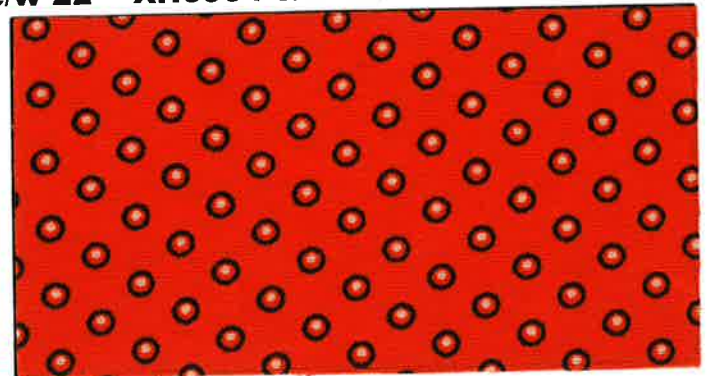
XH0904 c/w 22



XH0929 c/w 22



H0399 c/w 23



XH0167 c/w 23

c/w 22 = pink & black - c/w 23 = orange & black

pg. 17



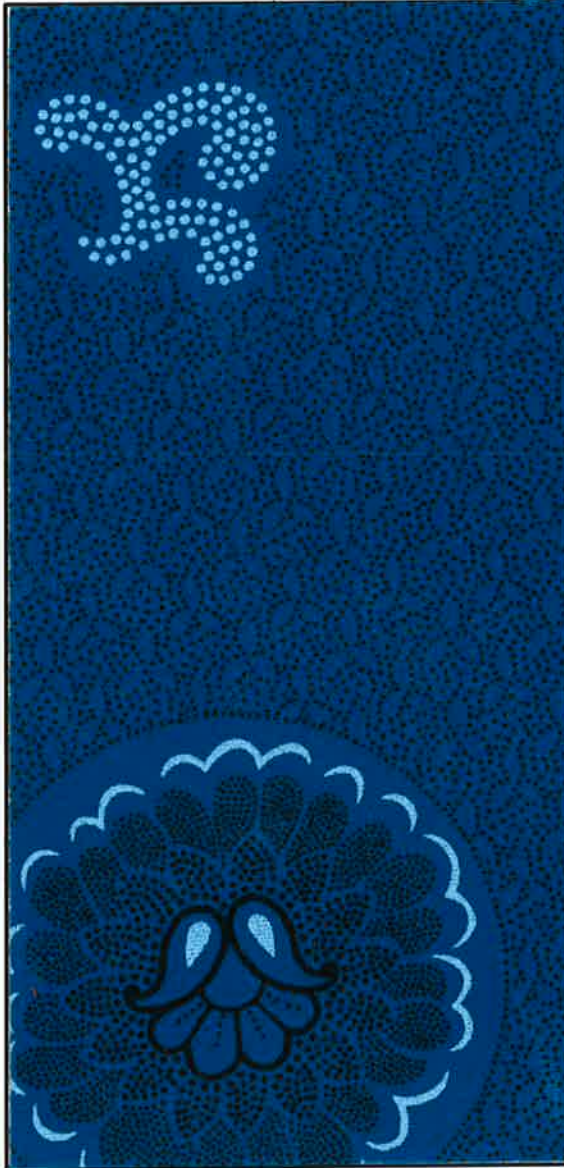
da Gama
TEXTILES

THREE CATS

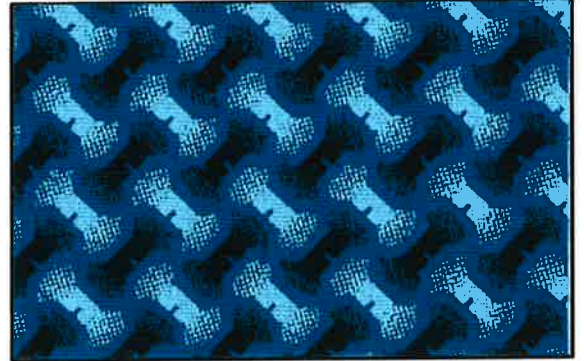
REG[®] TRADE MARK



B0028 c/w 25



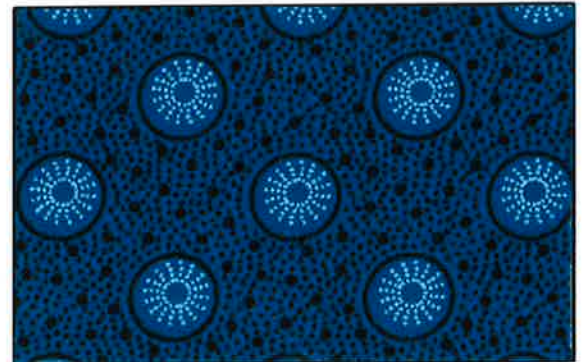
B6495 c/w 25



B9529 c/w 25



B9532 c/w 25



H0302 c/w 25



H0304 c/w 25



H0305 c/w 25



H0399 c/w 25



H0767 c/w 25

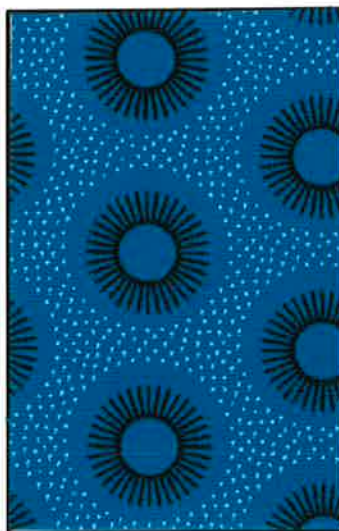
c/w 25 = turquoise & black



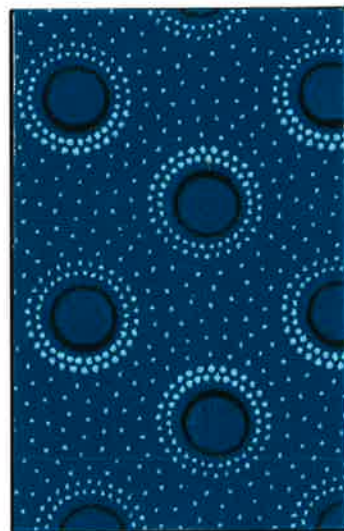
da Gama
TEXTILES
THREE CATS
REGD TRADE MARK



H0856 c/w 25



H0963 c/w 25



H0967 c/w 25



H1113 c/w 25



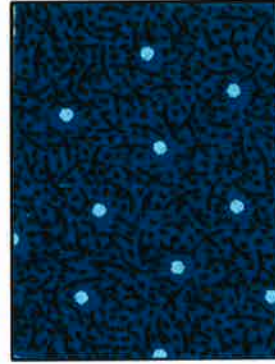
XB8851 c/w 25



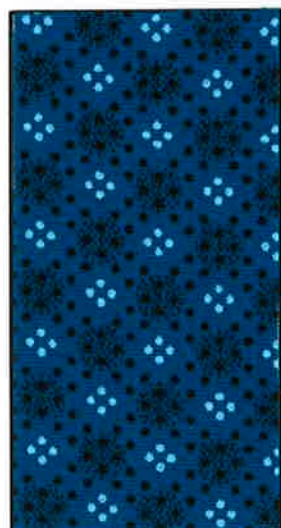
XB9488 c/w 25



XB9596 c/w 25



XB9840 c/w 25



XB9842 c/w 25



XH0054 c/w 25



XH0058 c/w 25



XH0147 c/w 25

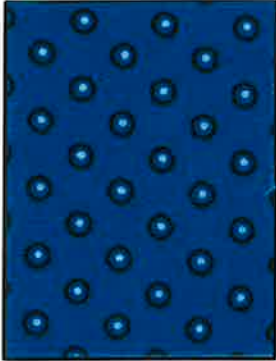
c/w 25 = turquoise & black



da Gama
TEXTILES

THREE CATS

REG[®] TRADE MARK



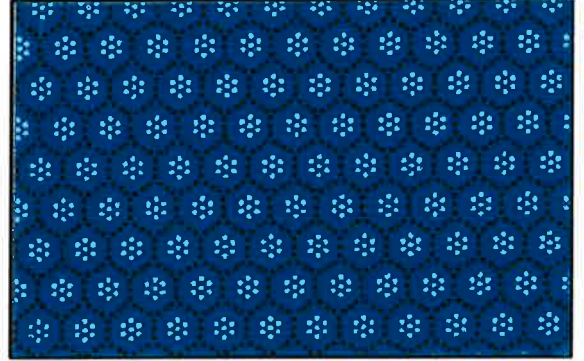
XH0167 c/w 25



XH0183 c/w 25



XH0195 c/w 25



XH0500 c/w 25



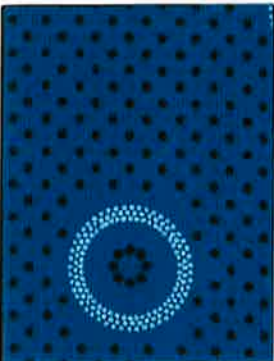
XH0527 c/w 25



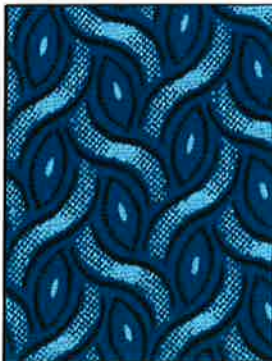
XH0528 c/w 25



XH0540 c/w 25



XH0840 c/w 25



XH0870 c/w 25



XH0904 c/w 25



XH0929 c/w 25

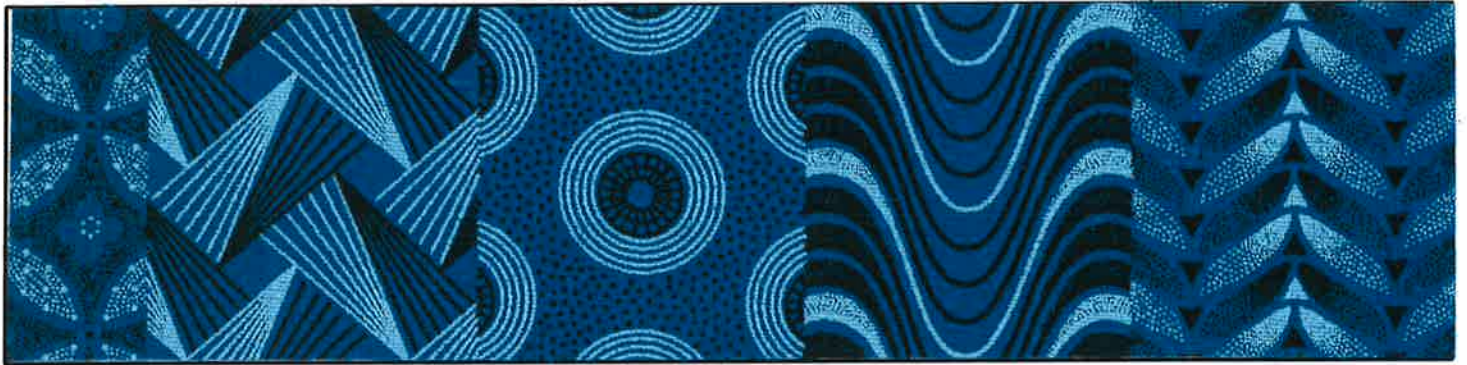
c/w 25 = turquoise & black



da Gama
TEXTILES

THREE CATS

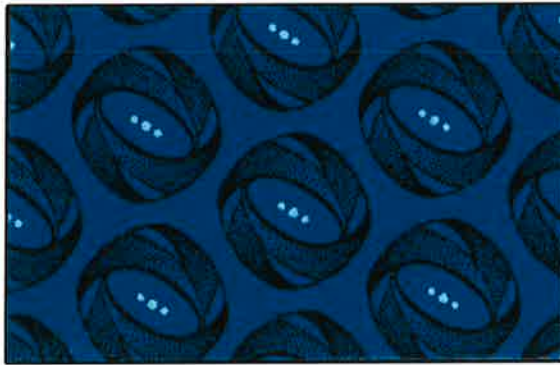
REG^d TRADE MARK



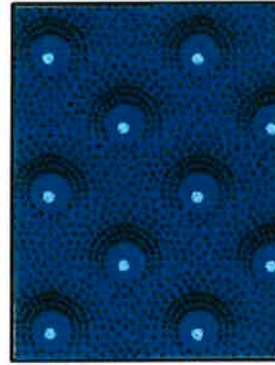
XH0971 c/w 25



XH1010 c/w 25



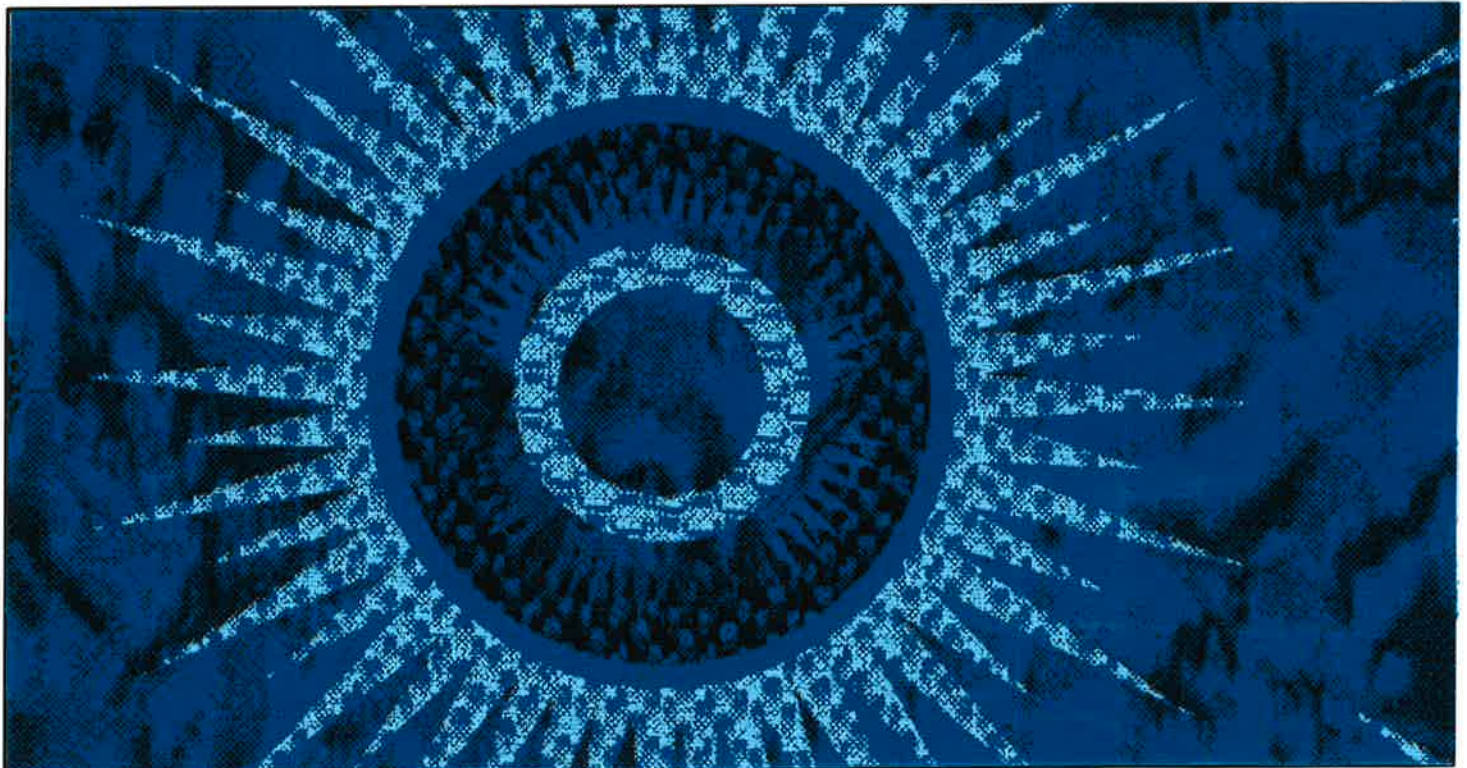
XH1012 c/w 25



XH1040 c/w 25



XH1049 c/w 25



XH1125 cw 25

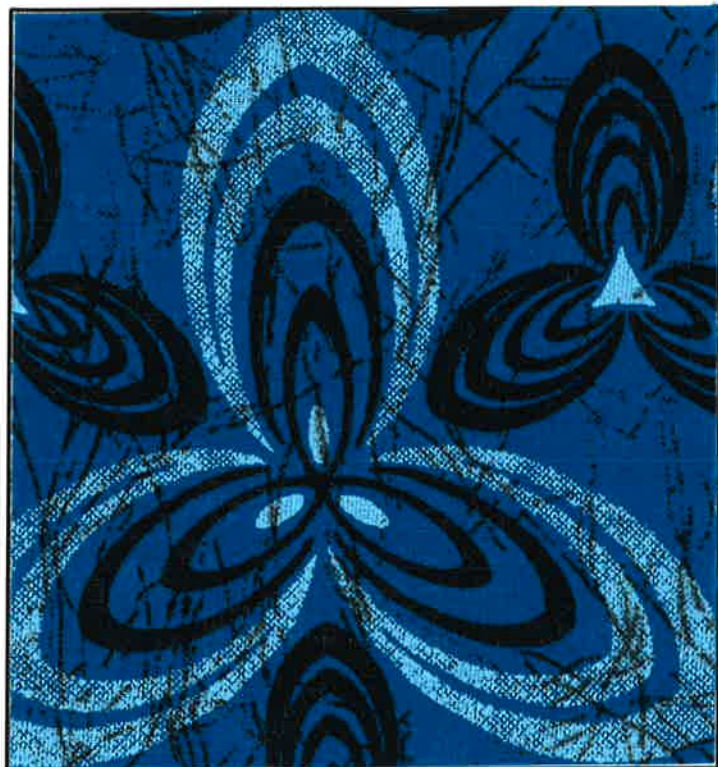
c/w 25 = turquoise & black



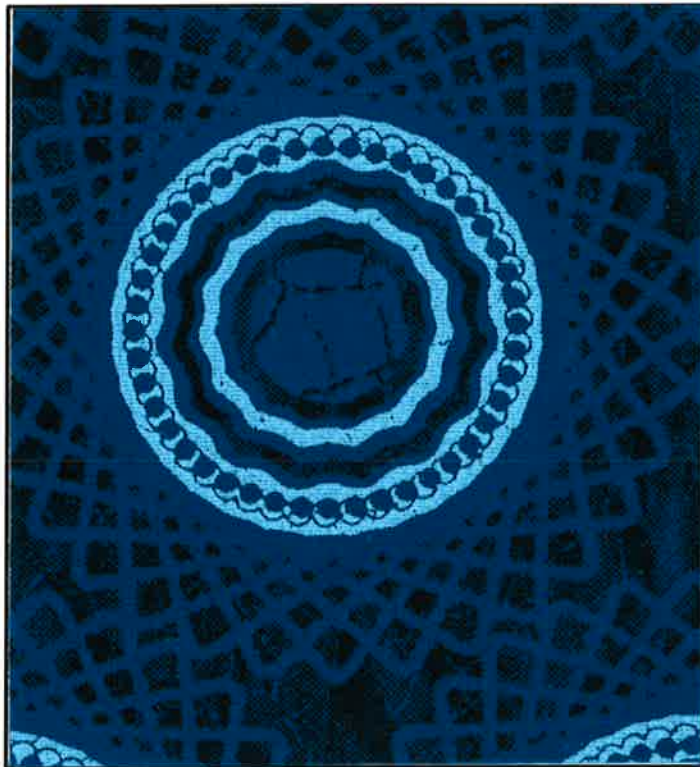
da Gama
TEXTILES

THREE CATS

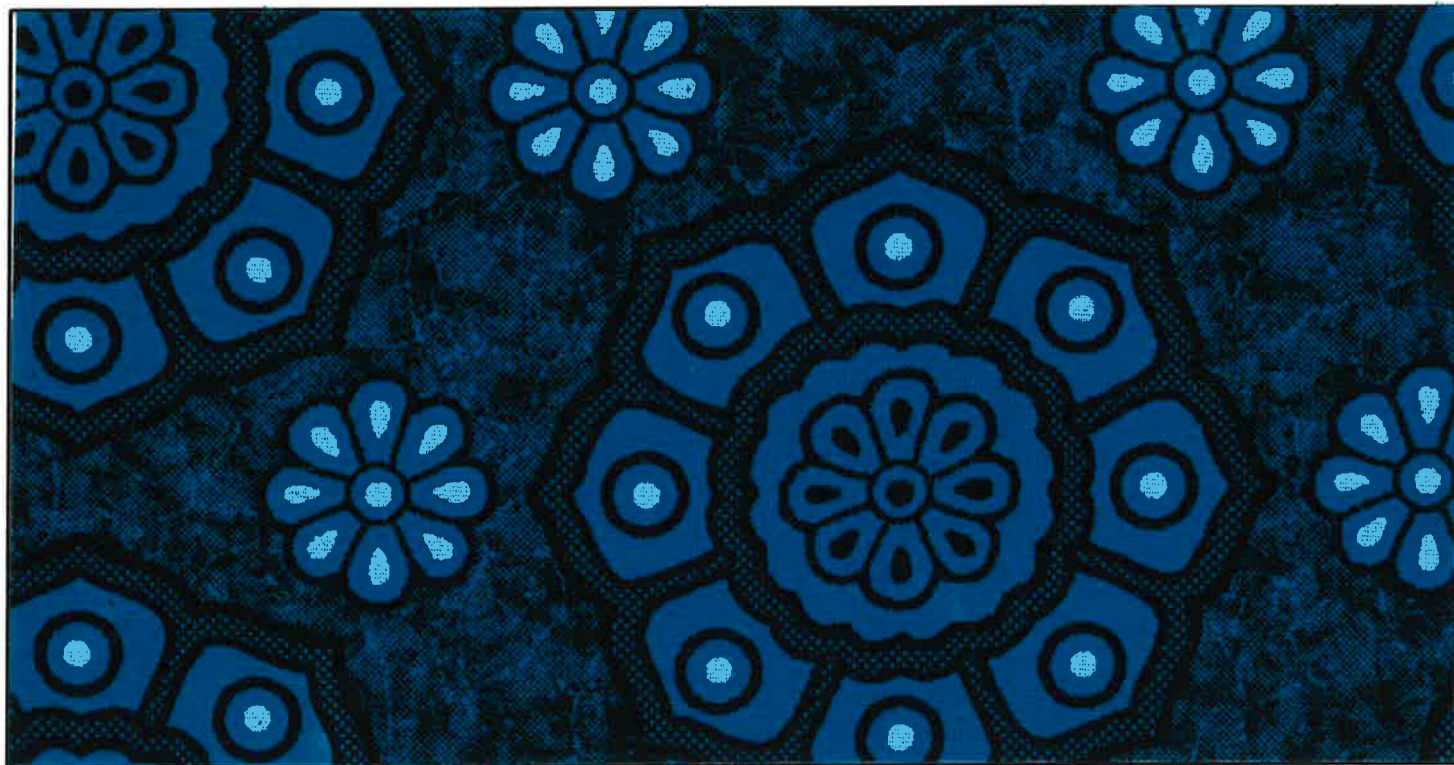
REG^d TRADE MARK



XH1127 c/w 25



XH1131 c/w 25



XH1135 c/w 25

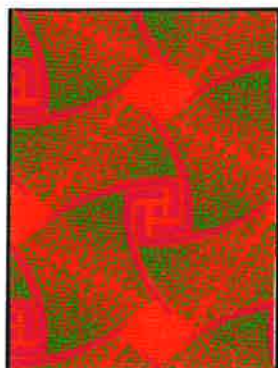
c/w 25 = turquoise & black



da Gama
TEXTILES

THREE CATS

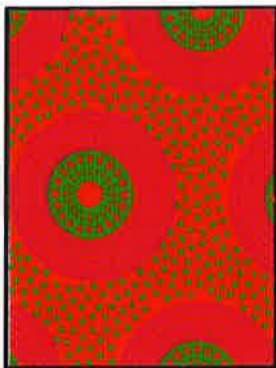
REG^d TRADE MARK



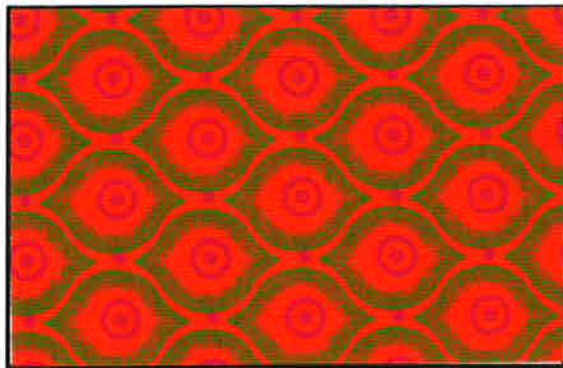
B9532 c/w 26



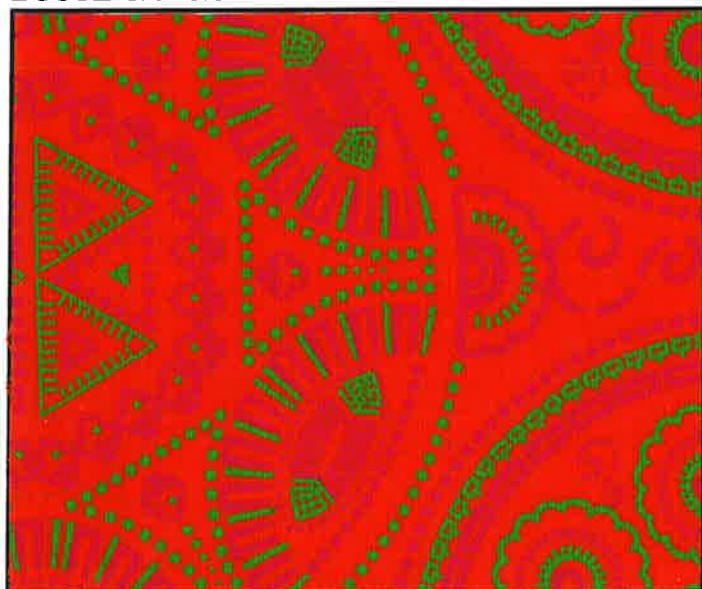
H0304 c/w 26



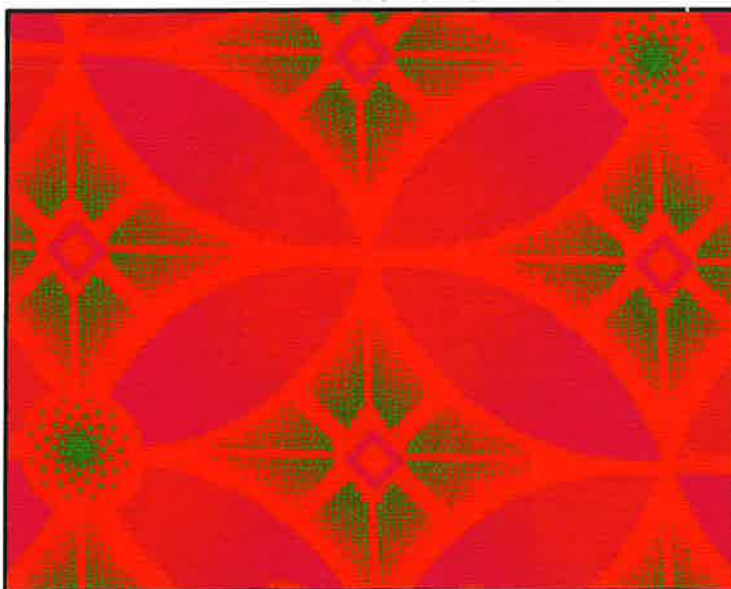
H0399 c/w 26



H0767 c/w 26



H0848 c/w 26



H0851 c/w 26



H0852 c/w 26



H0856 c/w 26

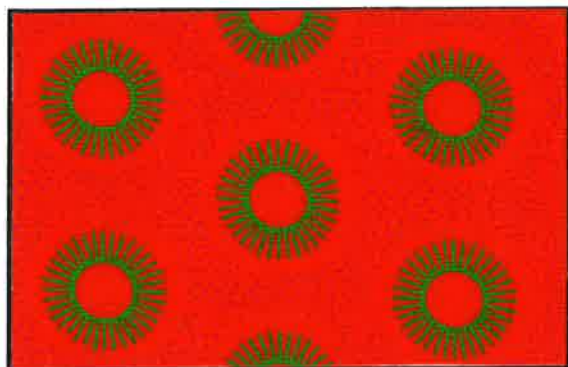
c/w 26 = apple green, cerise & orange



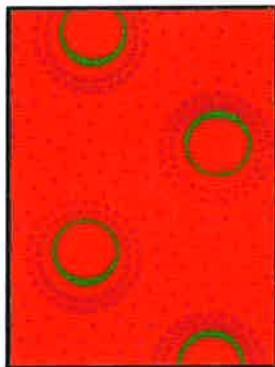
da Gama
TEXTILES

THREE CATS

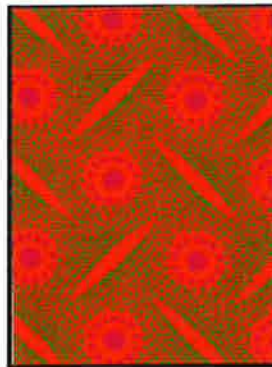
REG[®] TRADE MARK



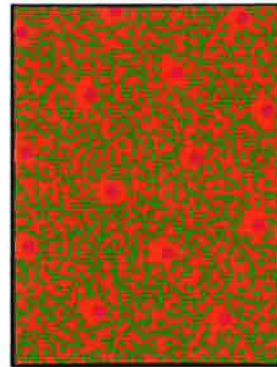
H0963 c/w 26



H0967 c/w 26



XB9596 c/w 26



XB9840 c/w 26



XH0054 c/w 26



XH0147 c/w 26



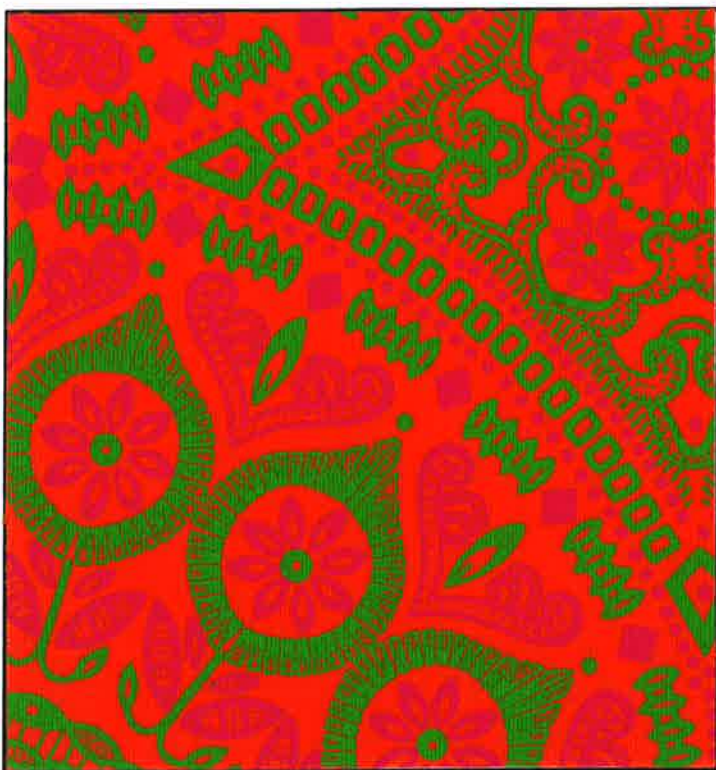
XH0167 c/w 26



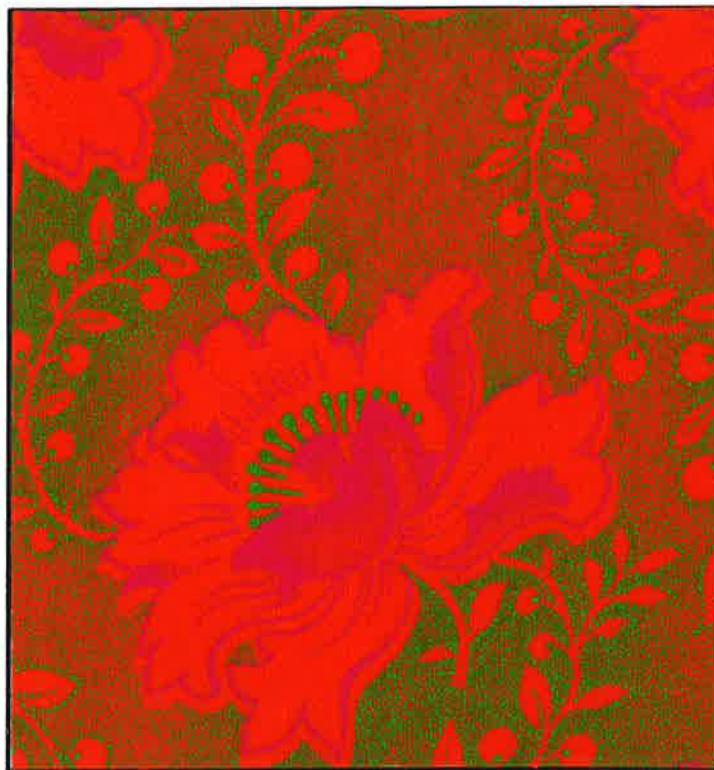
XH0195 c/w 26



XH0500 c/w 26

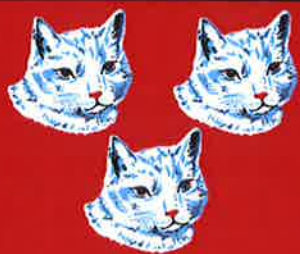


XH0527 c/w 26



XH0528 c/w 26

c/w 26 = apple green, cerise & orange



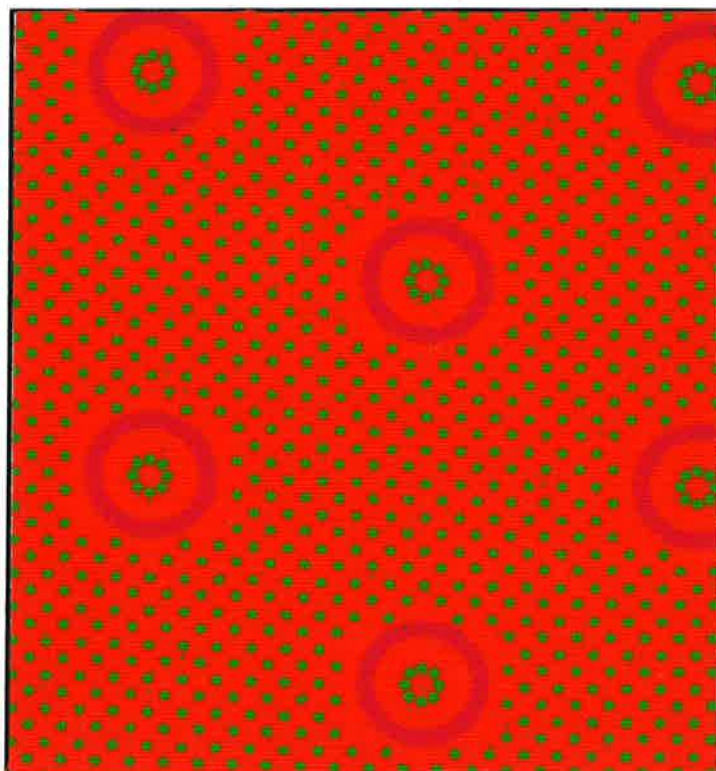
da Gama
TEXTILES

THREE CATS

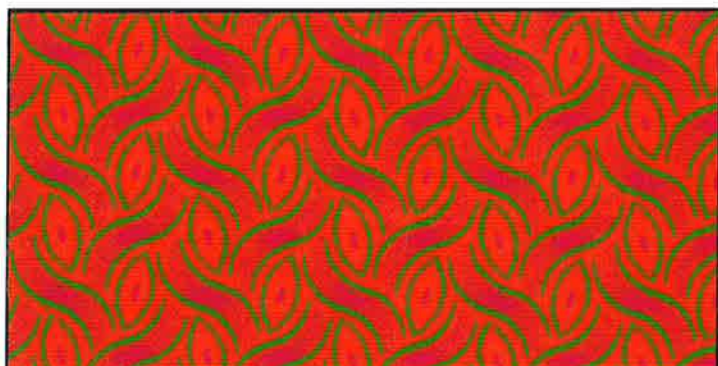
REGD TRADE MARK



XH0703 c/w 26



XH0840 c/w 26



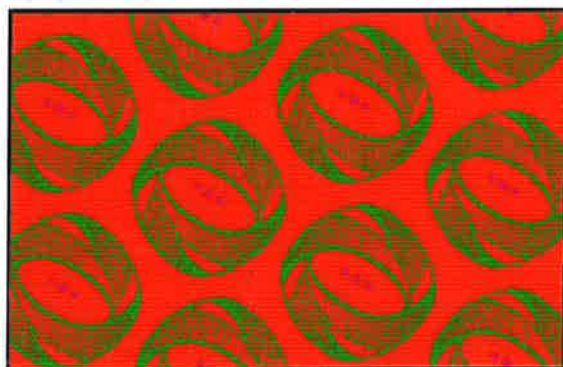
XH0870 c/w 26



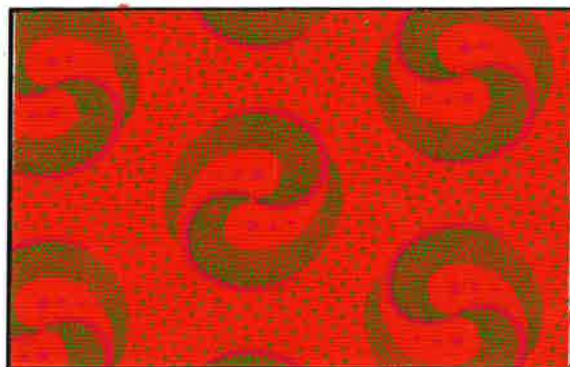
XH0904 c/w 26



XH1010 c/w 26



XH1012 c/w 26



XH1049 c/w 26

c/w 26 = apple green, cerise & orange

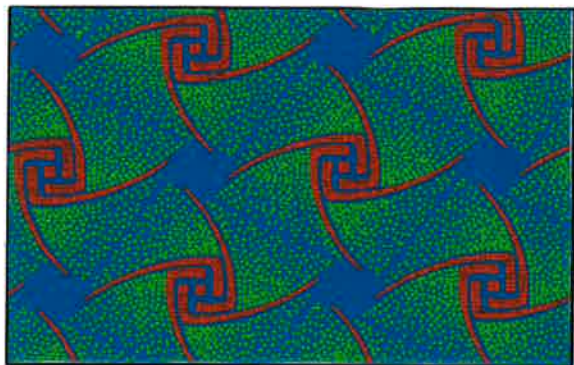
pg. 25



da Gama
TEXTILES

THREE CATS

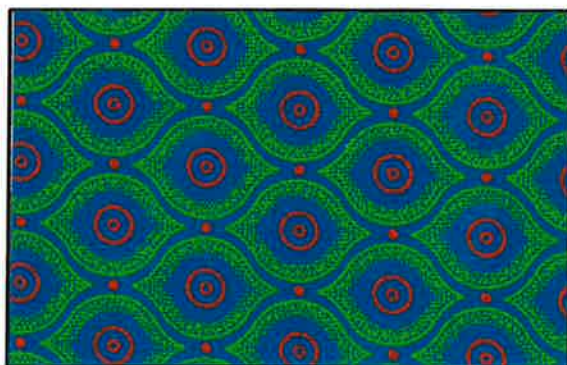
REG^d TRADE MARK



B9532 c/w 27



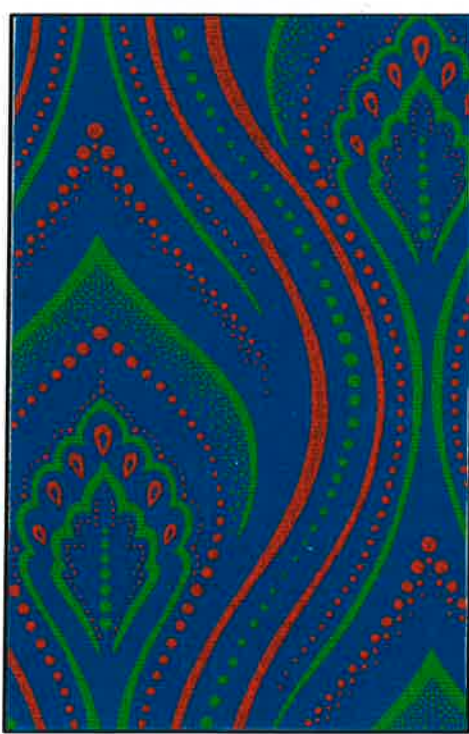
H0399 c/w 27



H0767 c/w 27



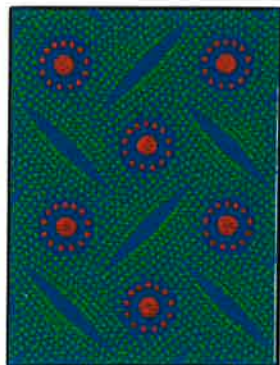
H0848 c/w 27



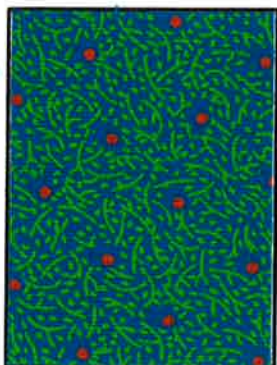
H0852 c/w 27



H0856 c/w 27



XB9596 c/w 27



XB9840 c/w 27



XH0147 c/w 27



XH0167 c/w 27



XH0500 c/w 27

c/w 27 = green, orange & turquoise



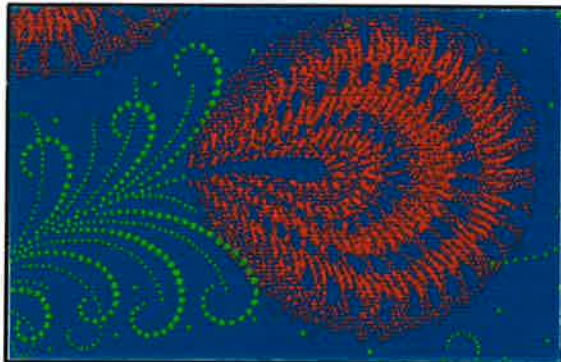
da Gama
TEXTILES

THREE CATS

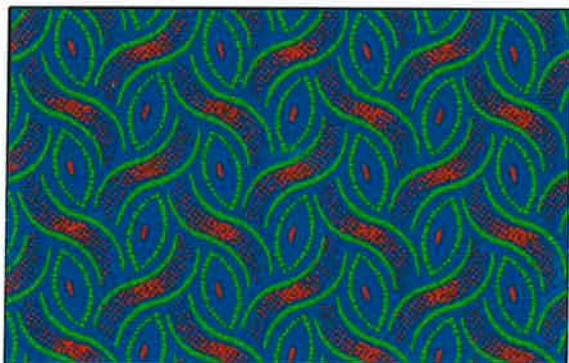
REG[®] TRADE MARK



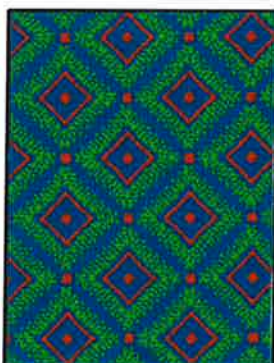
XH0528 c/w 27



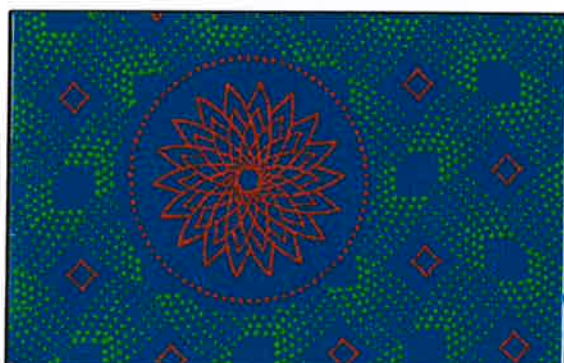
XH0703 c/w 27



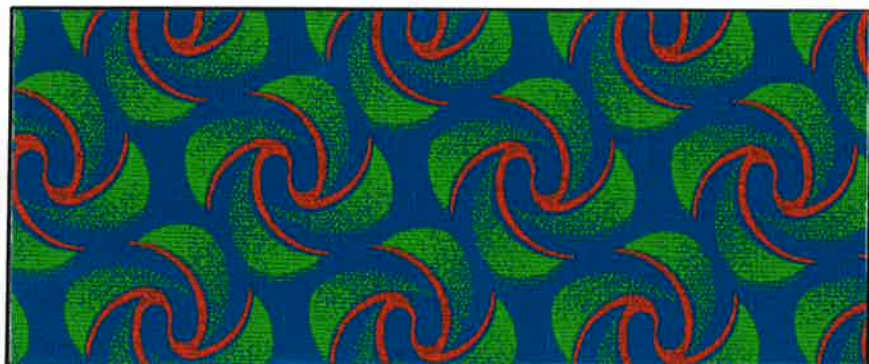
XH0870 c/w 27



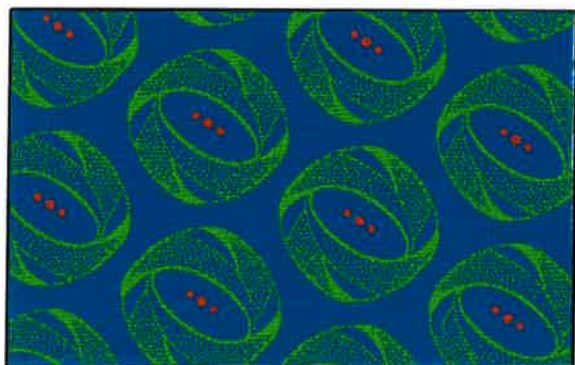
XH0904 c/w 27



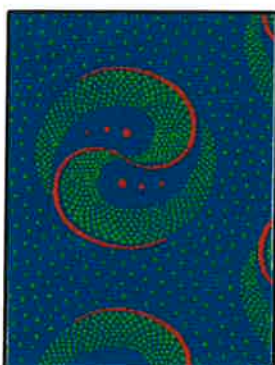
XH0954 c/w 27



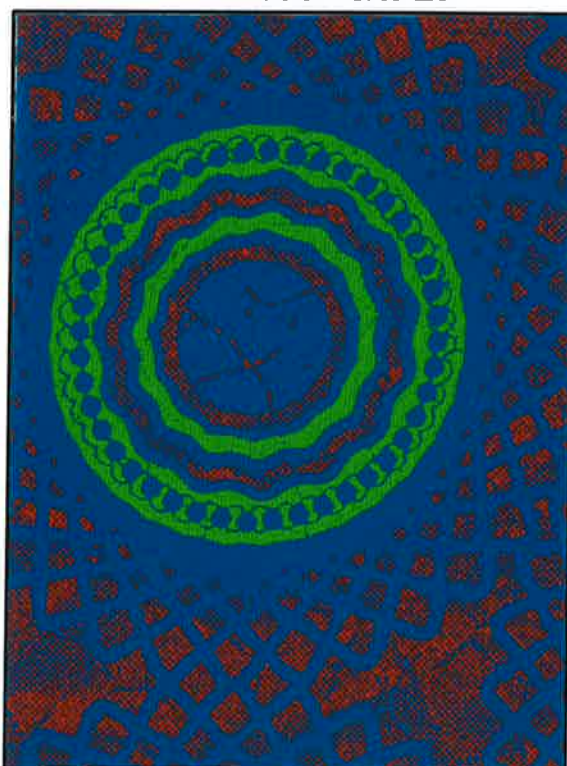
XH1010 c/w 27



XH1012 c/w 27



XH1049 c/w 27



XH1131 c/w 27

c/w 27 = green, orange & turquoise



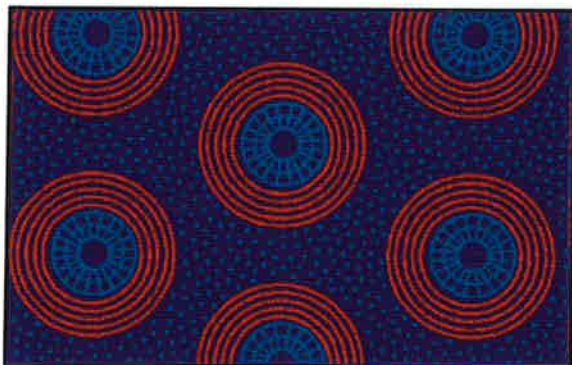
da Gama
TEXTILES

THREE CATS

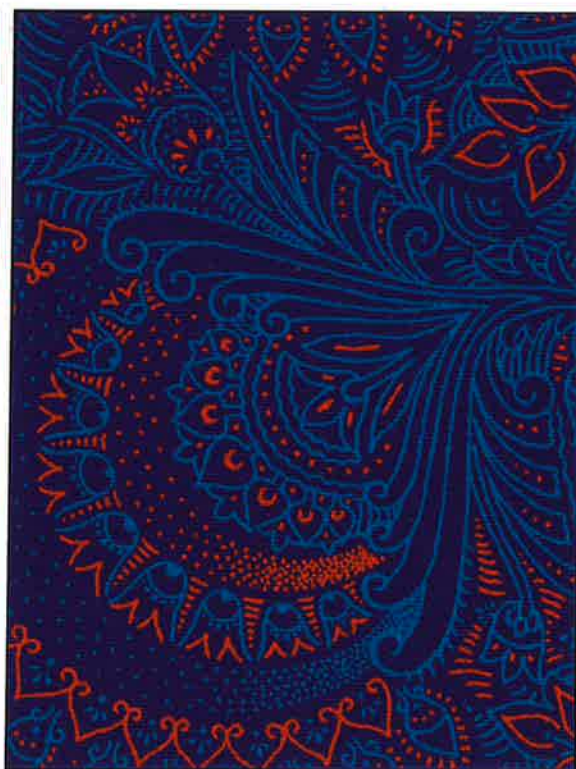
REG[®] TRADE MARK



B0028 cw 30



H0399 cw 30



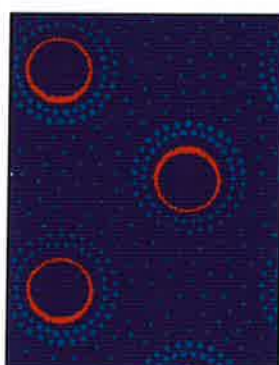
H0856 cw 30



H0767 cw 30



H0963 cw 30



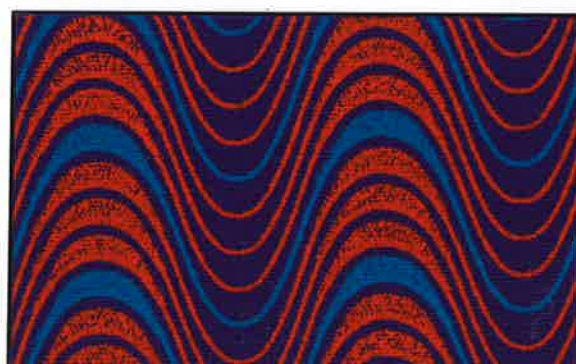
H0967 cw 30



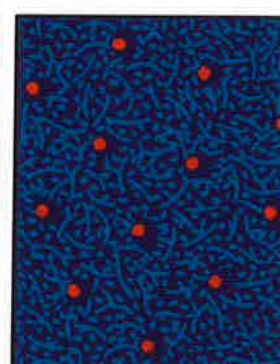
H1119 cw 30



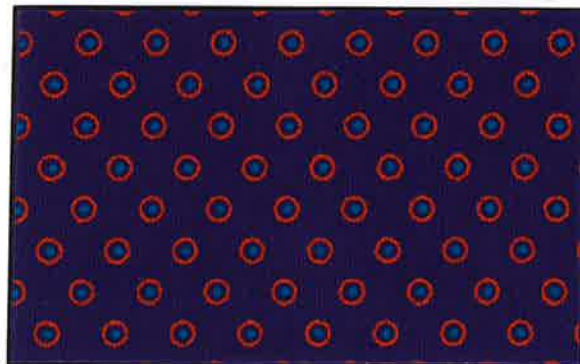
XB9596 cw 30



XB9705 cw 30



XB9840 cw 30



XH0167 cw 30



XH0195 cw 30



XH0500 cw 30

c/w 30 = purple, turquoise & orange

pg. 28



da Gama
TEXTILES

THREE CATS

REG[®] TRADE MARK



XH0527 cw 30



XH0528 cw 30



XH0703 cw 30



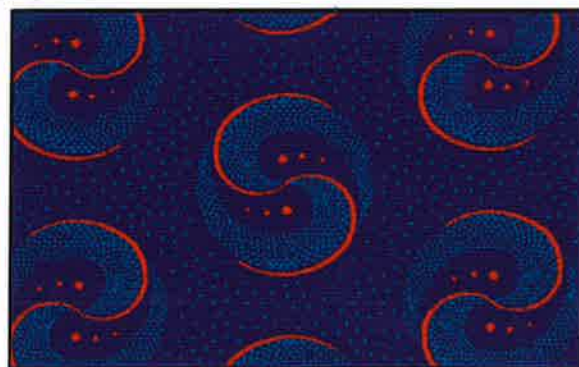
XH0870 cw 30



XH0904 cw 30



XH1010 cw 30



XH1049 cw 30

c/w 30 = purple, turquoise & orange

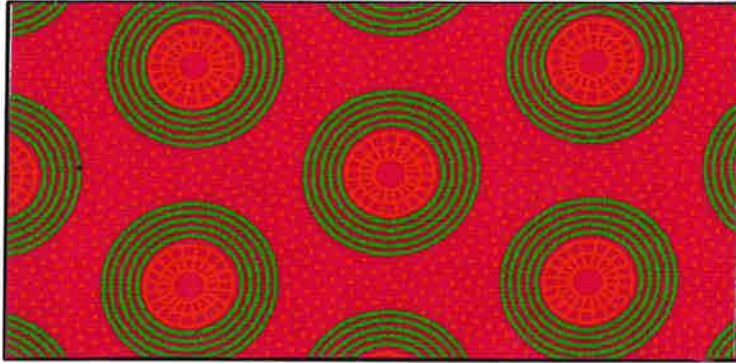
pg. 29



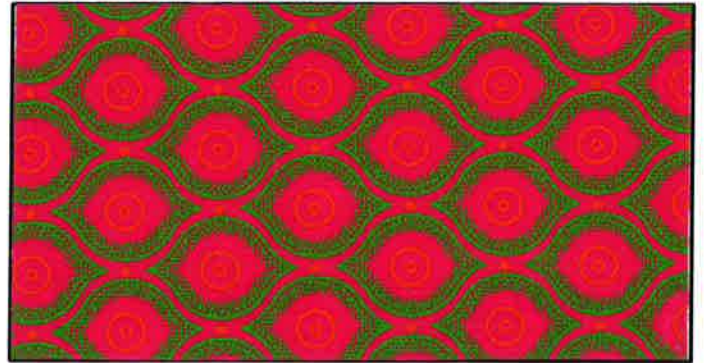
da Gama
TEXTILES

THREE CATS

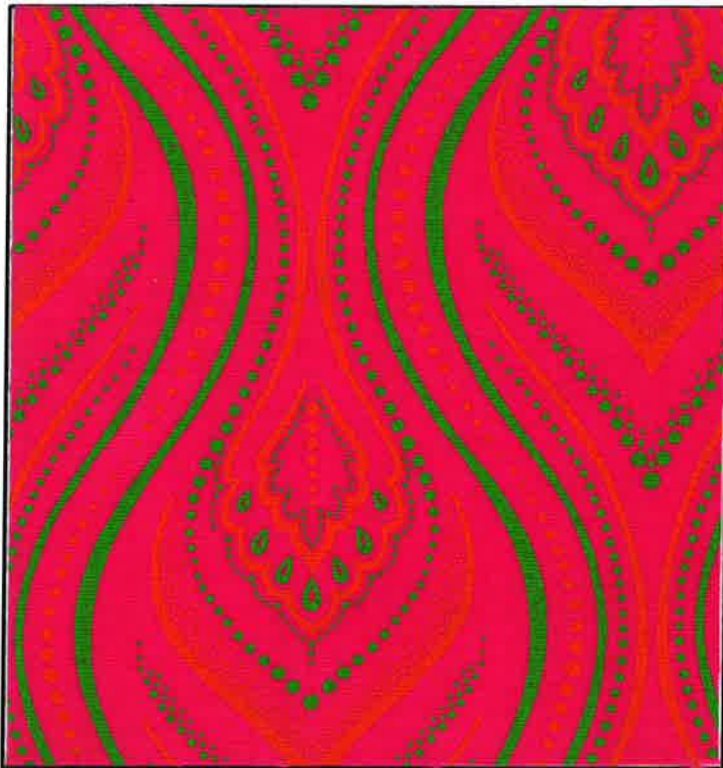
REG[®] TRADE MARK



H0399 c/w 36



H0767 c/w 36



H0852 c/w 36



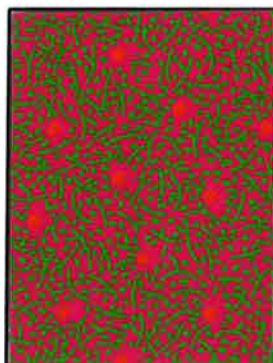
H0856 c/w 36



H0963 c/w 36



H0967 c/w 36



XB9840 c/w 36

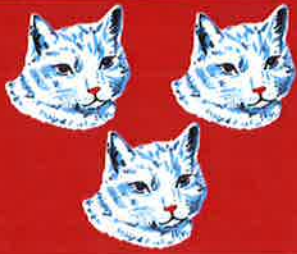


XH0147 c/w 36



XH0167 c/w 36

c/w 36 = pink, apple green & orange



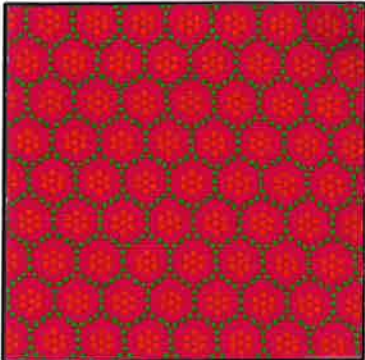
da Gama
TEXTILES

THREE CATS

REG[®] TRADE MARK



XH0195 c/w 36



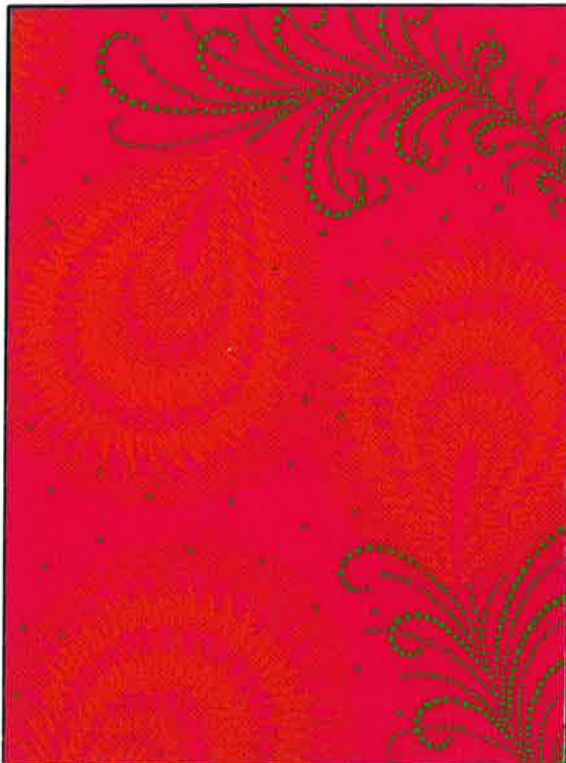
XH0500 c/w 36



XH0527 c/w 36



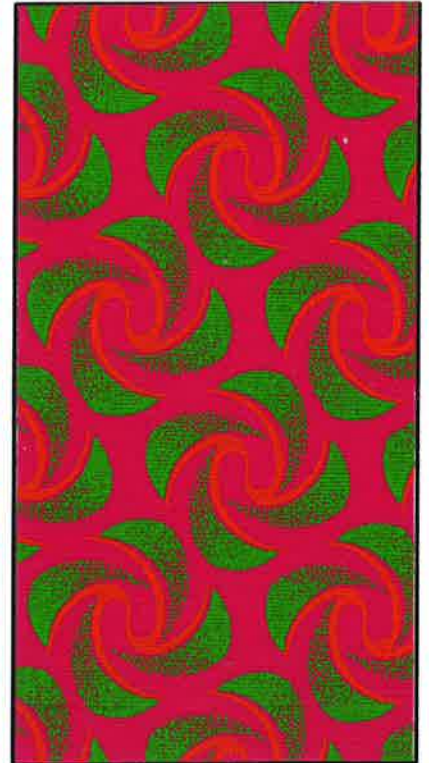
XH0528 c/w 36



XH0703 c/w 36



XH0870 c/w 36



XH1010 c/w 36

c/w 36 = pink, apple green & orange

pg. 31



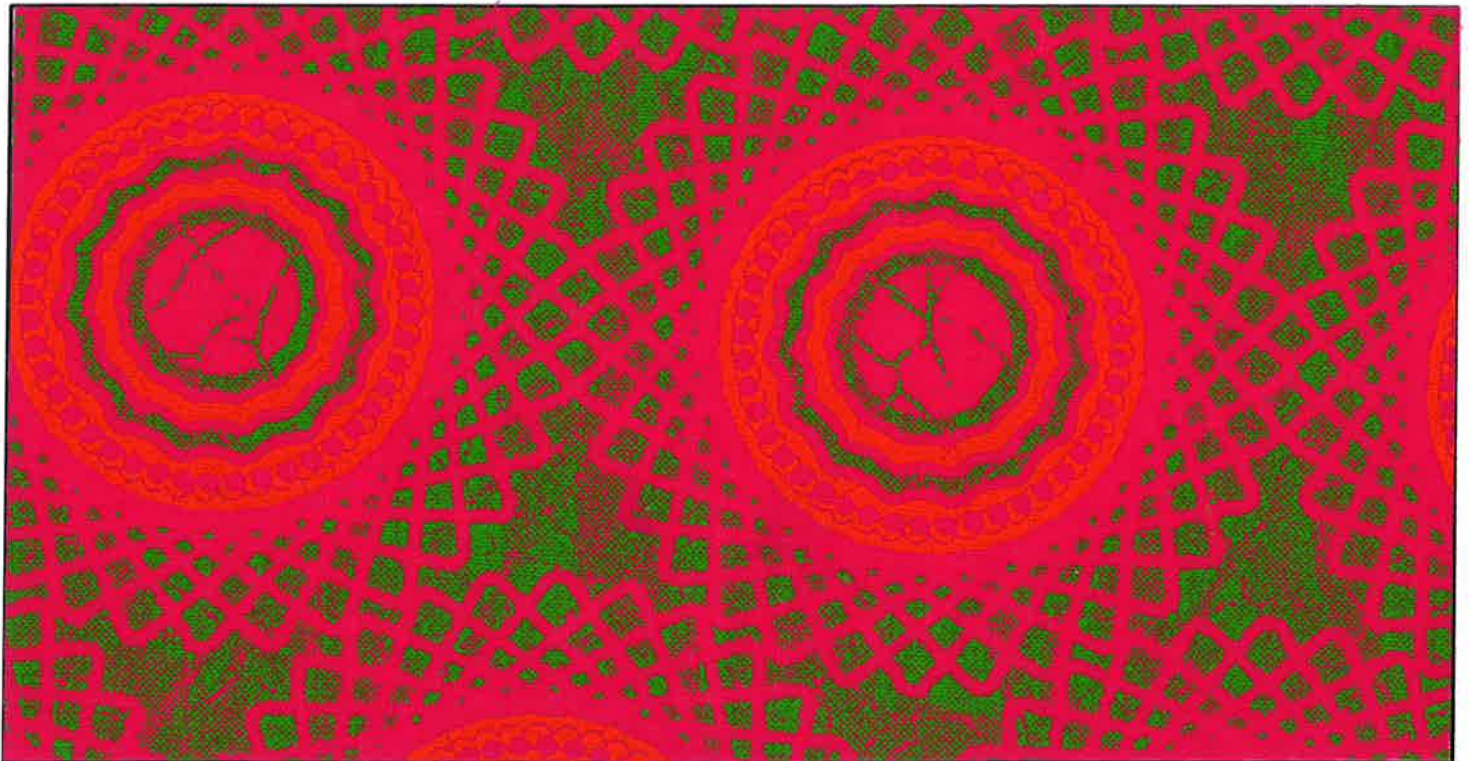
da Gama
TEXTILES
THREE CATS
REGD TRADE MARK



XH1125 c/w 36



XH1127 c/w 36



XH1131 c/w 36

c/w 36 = pink, apple green & orange



da Gama
TEXTILES

THREE CATS

REG^d TRADE MARK



B9529 c/w 42



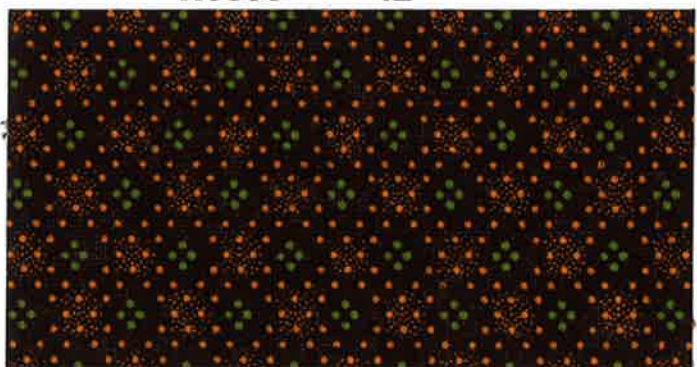
H0305 c/w 42



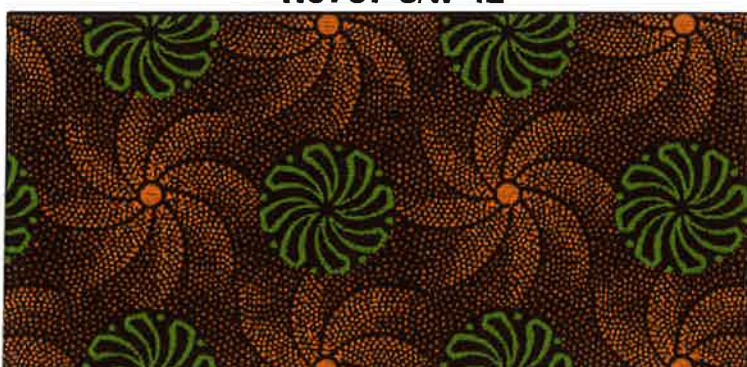
H0399 c/w 42



H0767 c/w 42



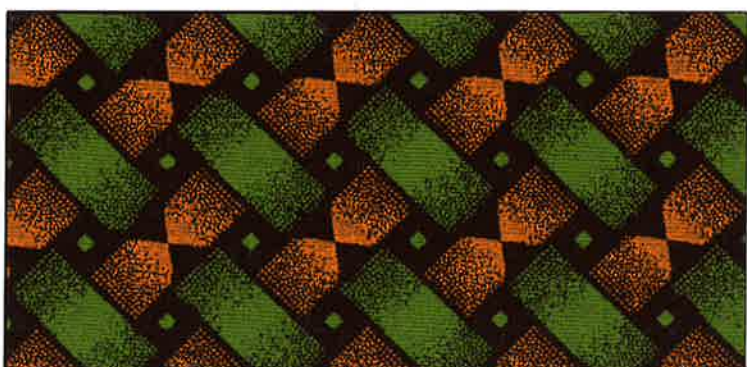
XB9842 c/w 42



XH0147 c/w 42



XH0167 c/w 42



XH0516 c/w 42

c/w 42 = avo green & orange



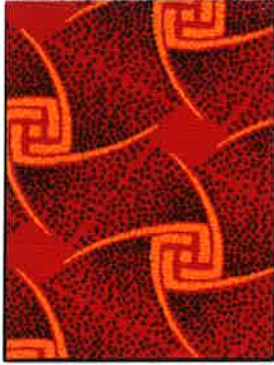
da Gama
TEXTILES

THREE CATS

REG[®] TRADE MARK



B0028 c/w 53



B9532 c/w 53



H0399 c/w 53



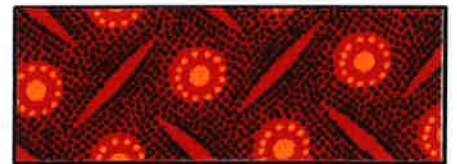
H0767 c/w 53



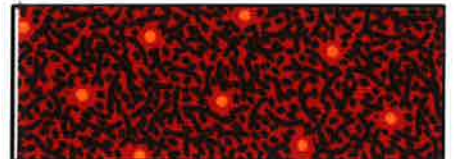
H0856 c/w 53



XB8851 c/w 53/



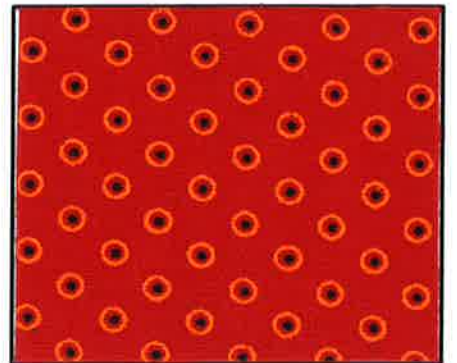
XB9596 c/w 53



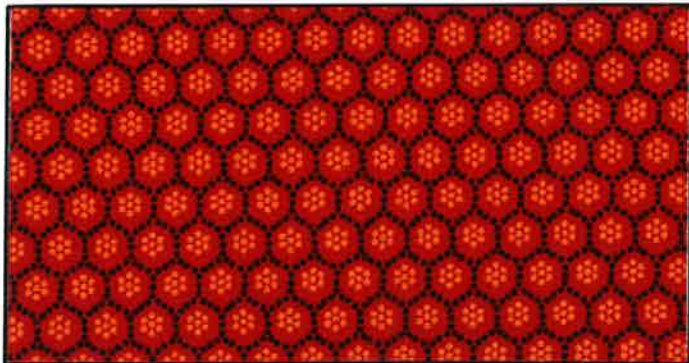
XB9840 c/w 53



XH0147 c/w 53



XH0167 c/w 53



XH0500 c/w 53



XH0528 c/w 53

c/w 53 = red, golden orange & black



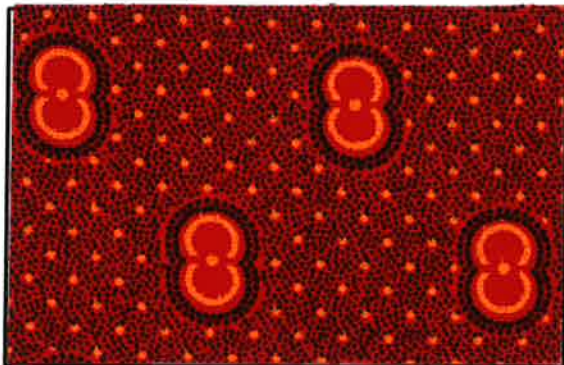
da Gama
TEXTILES

THREE CATS

REG^o TRADE MARK



XH0870 c/w 53



XH0929 c/w 53



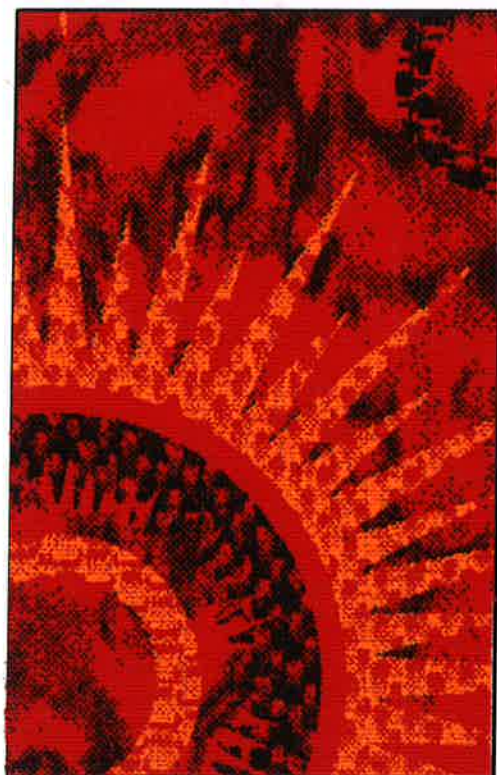
XH1010 c/w 53



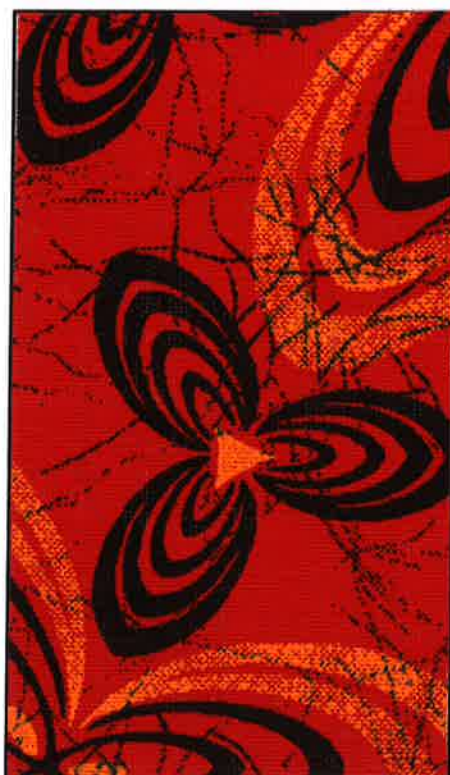
XH1049 c/w 53



XH0971 c/w 53



XH1125 c/w 53



XH1127 c/w 53



XH1131 c/w 53

c/w 53 = red, golden orange & black



da Gama
TEXTILES

THREE CATS

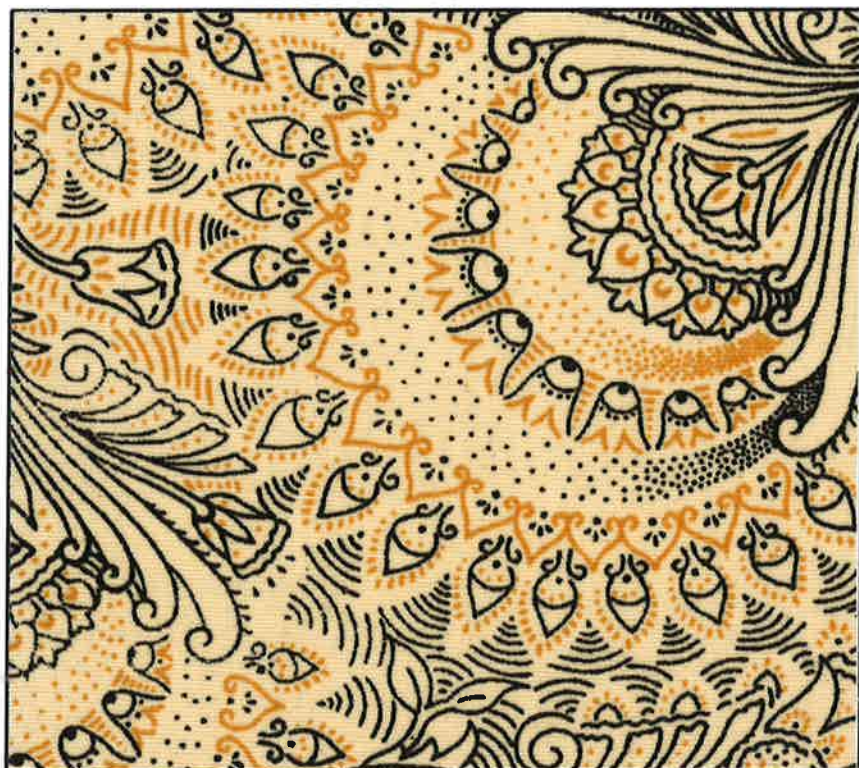
REG^d TRADE MARK



H0399 c/w 55



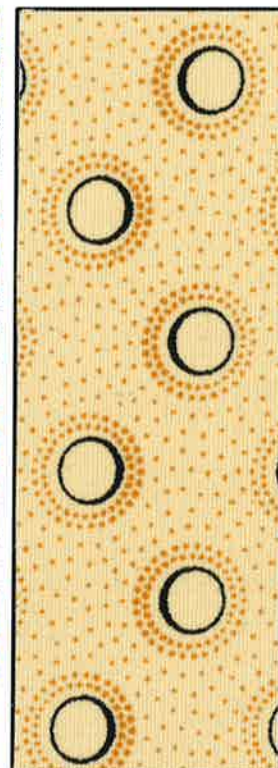
H0767 c/w 55



H0856 c/w 55



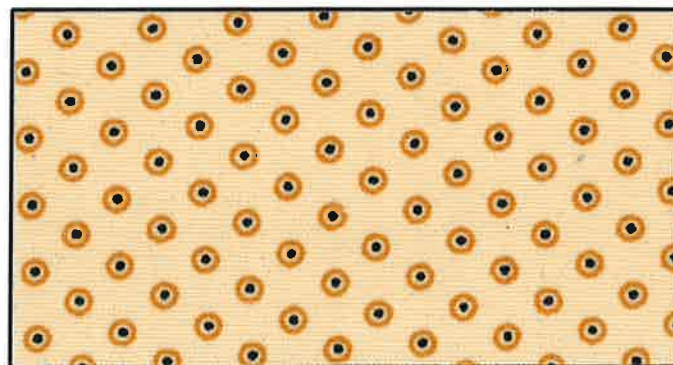
H0963 c/w 55



H0967 c/w 55



XH0147 c/w 55



XH0167 c/w 55

c/w 55 = cream, mustard & black

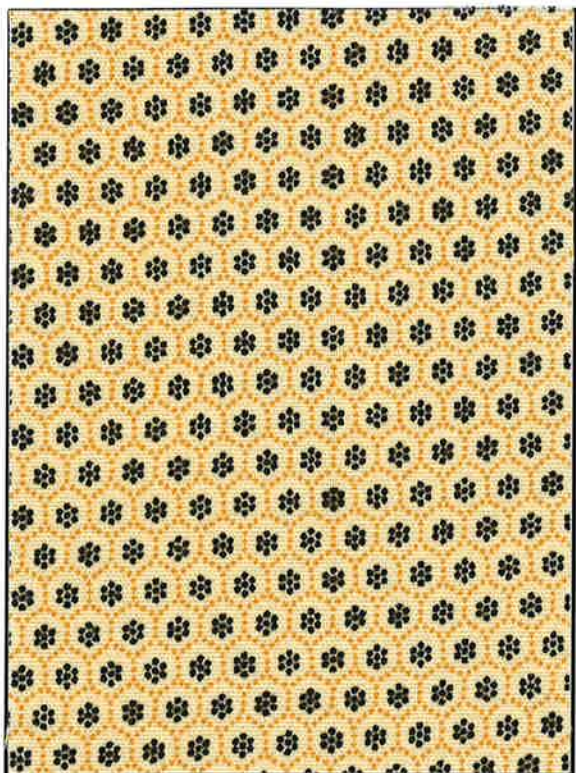
pg.36



da Gama
TEXTILES

THREE CATS

REG[®] TRADE MARK



XH0500 c/w 55



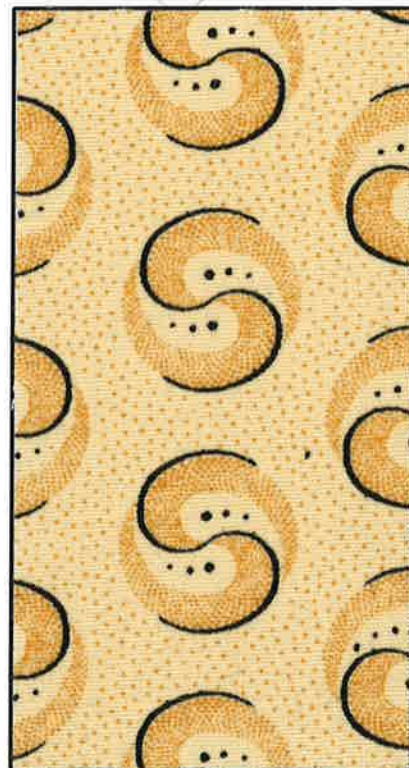
XH0527 c/w 55



XH0528 c/w 55

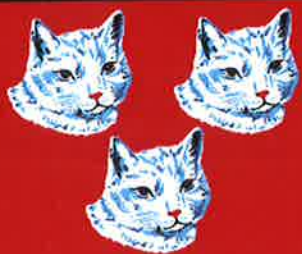


XH1010 c/w 55



XH1049 c/w 55

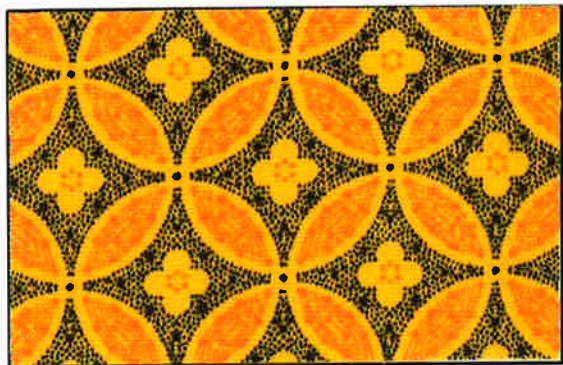
c/w 55 = cream, mustard & black



da Gama
TEXTILES

THREE CATS

REG^d TRADE MARK



H0304 c/w 58



H0399 c/w 58



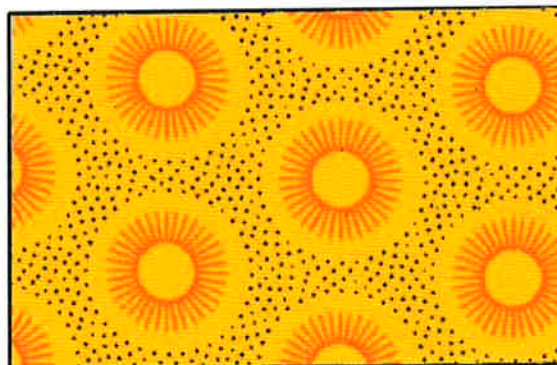
H0767 c/w 58



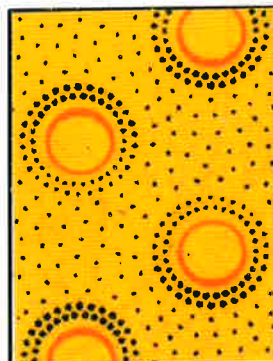
H0852 c/w 58



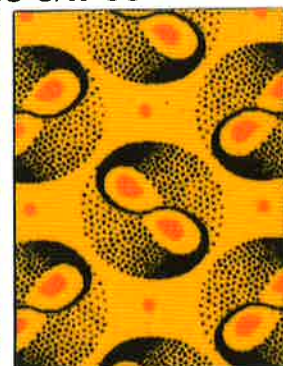
H0856 c/w 58



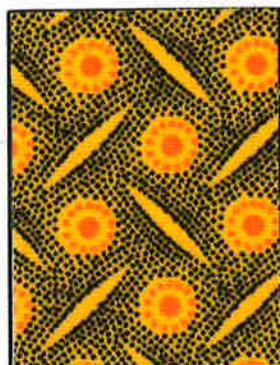
H0963 c/w 58



H0967 c/w 58



H1119 c/w 58



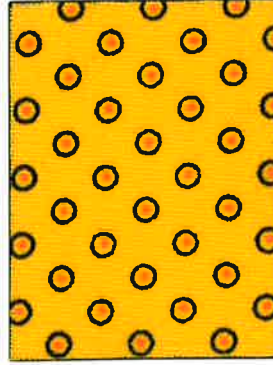
XB9596 c/w 58



XB9840 c/w 58



XH0147 c/w 58



XH0167 c/w 58



XH0195 c/w 58

c/w 58 = golden yellow & black



da Gama
TEXTILES

THREE CATS

REGD TRADE MARK



XH0528 c/w 58



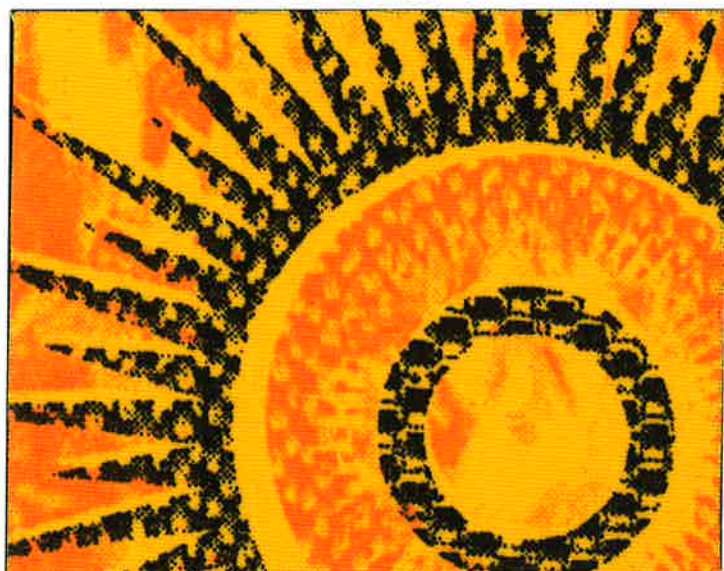
XH0870 c/w 58



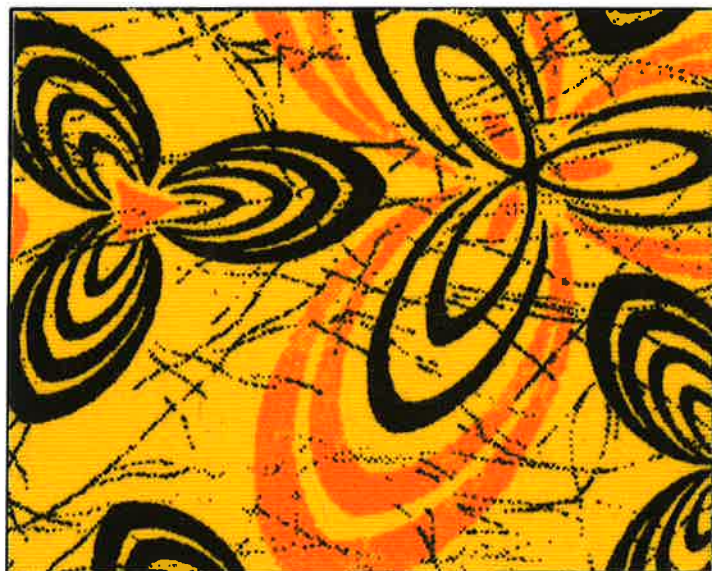
XH0904 c/w 58



XH1010 c/w 58



XH1125 c/w 58



XH1127 c/w 58



XH1131 c/w 58



XH1135 c/w 58

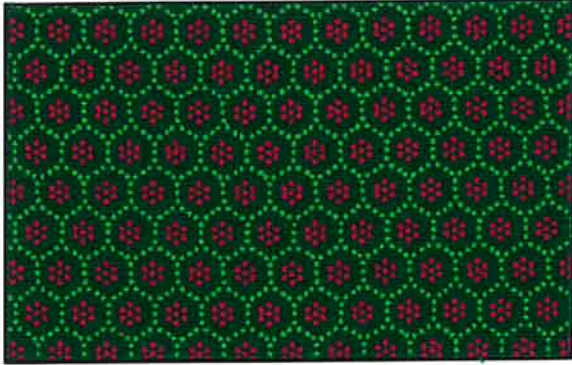
c/w 58 = golden yellow & black



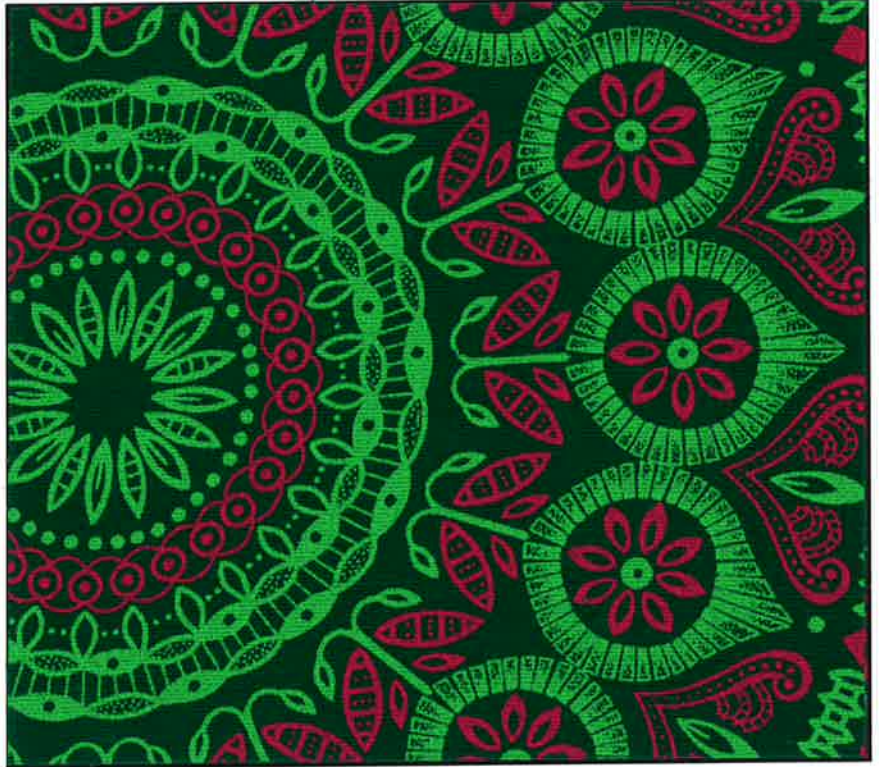
da Gama
TEXTILES

THREE CATS

REG[®] TRADE MARK



XH0500 cw 60



XH0527 cw 60



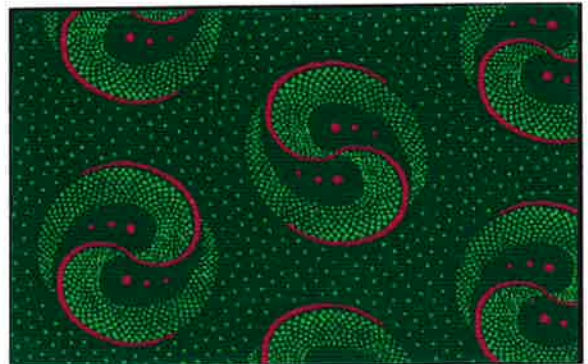
XH0528 cw 60



XH0870 cw 60



XH1010 cw 60



XH1049 cw 60

c/w 60 = green, cerise & light green

pg.40



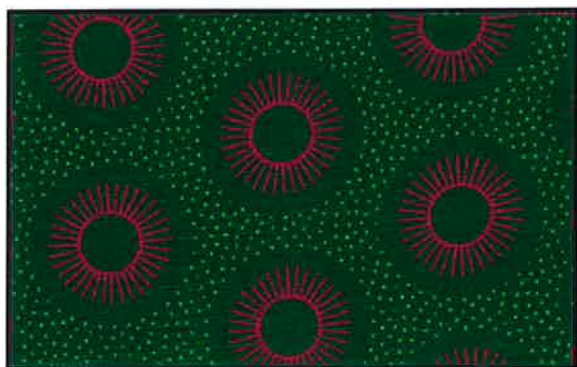
da Gama
TEXTILES

THREE CATS

REGD TRADE MARK



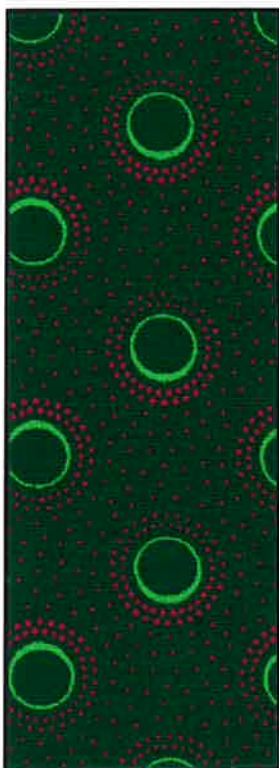
H0399 cw 60



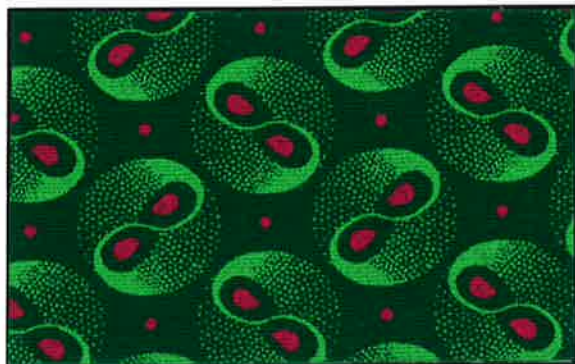
H0963 cw 60



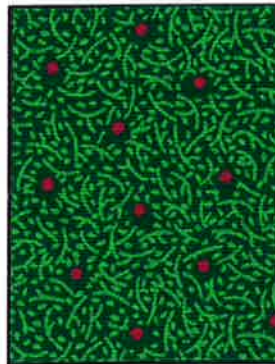
H0856 cw 60



H0967 cw 60



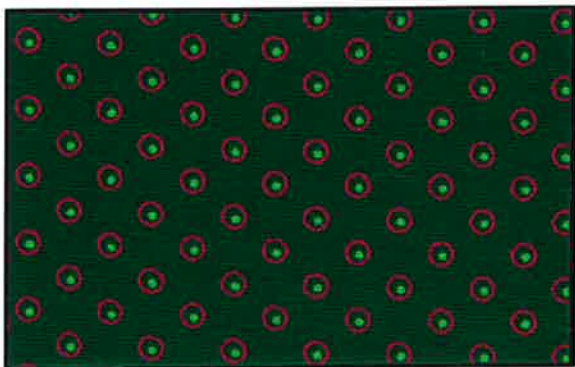
H1119 cw 60



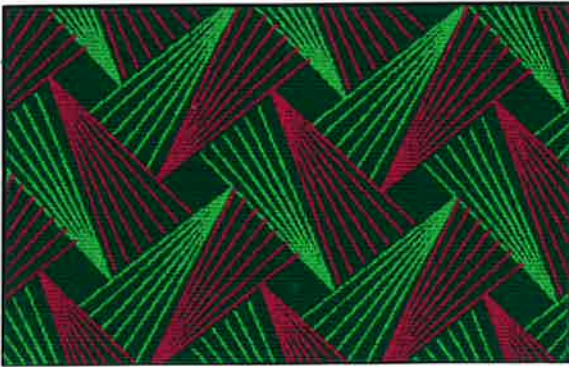
XB9840 cw 60



XH0147 cw 60



XH0167 cw 60



XH0195 cw 60

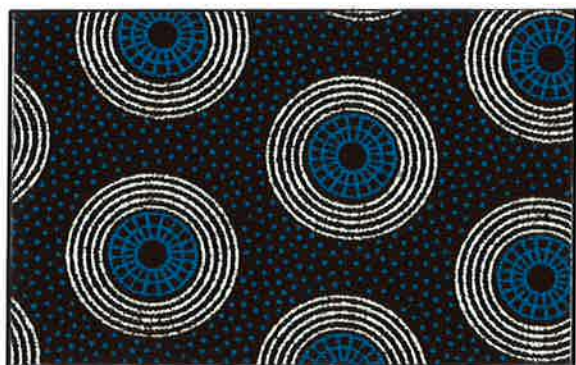
c/w 60 = green, cerise & light green

pg.41



da gama TEXTILES THREE CATS

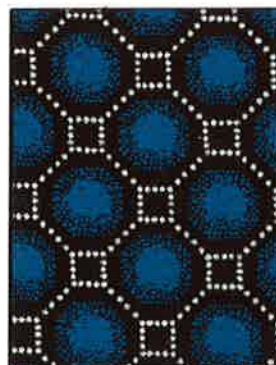
REGD TRADE MARK



H0399 c/w 71



H0767 c/w 71



XB5835 c/w 71



XB9596 c/w 71



XB9840 c/w 71



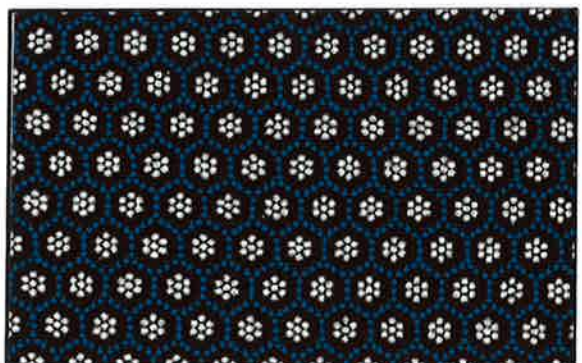
XH0147 c/w 71



XH0167 c/w 71



XH0195 c/w 71



XH0500 c/w 71



XH0514 c/w 71



XH0516 c/w 71

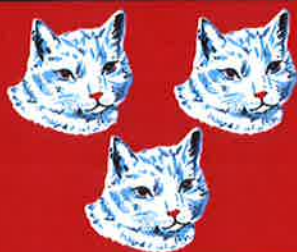


XH0808 c/w 71



XH0971 c/w 71

c/w 71 = brown, cream & turquoise



da Gama
TEXTILES

THREE CATS

REGD TRADE MARK



B9529 c/w 74



H0304 c/w 74



H0399 c/w 74



H0767 c/w 74



H0963 c/w 74



H0967 c/w 74



XB5835 c/w 74



XB9596 c/w 74



XB9840 c/w 74



XH0147 c/w 74



XH0167 c/w 74



XH0183 c/w 74



XH0195 c/w 74



XH0500 c/w 74



XH0840 c/w 74



XH0870 c/w 74



XH0904 c/w 74



XH0929 c/w 74



XH0954 c/w 74



XH1049 c/w 74

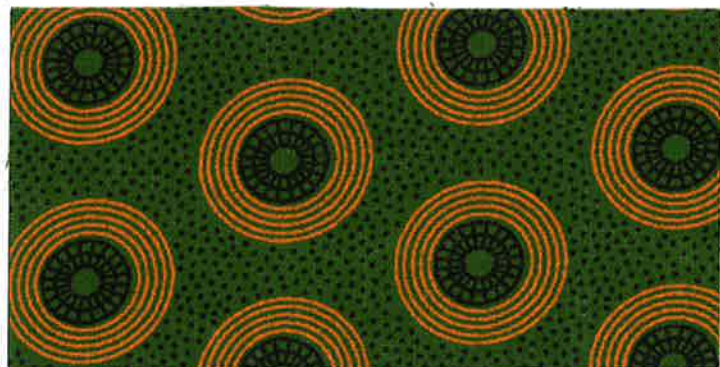
c/w 74 = navy, turquoise & white



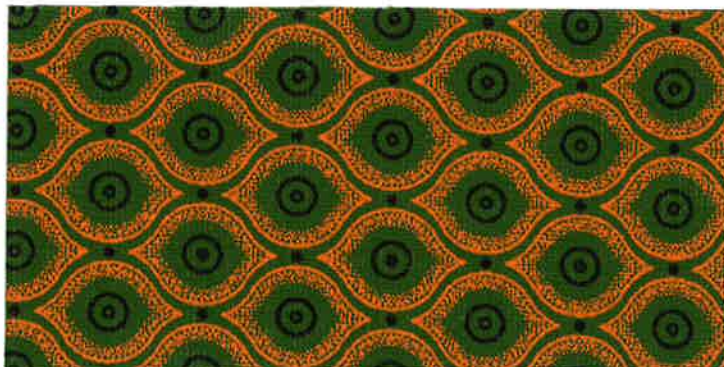
da Gama
TEXTILES

THREE CATS

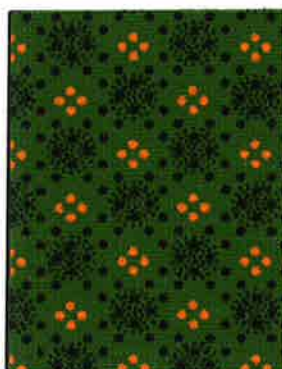
REG^o TRADE MARK



H0399 c/w 84



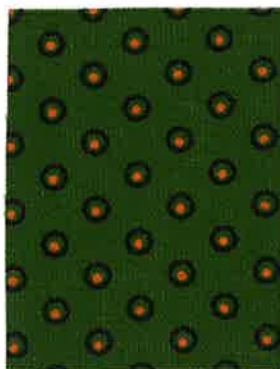
H0767 c/w 84



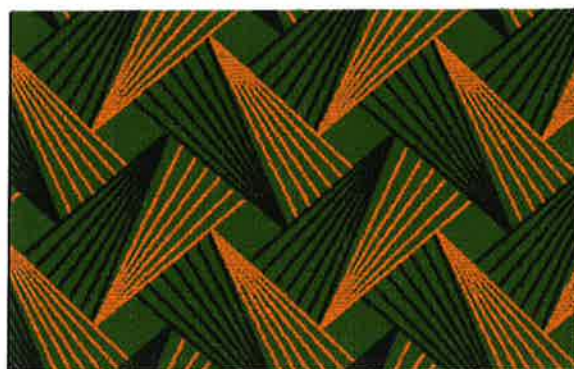
XB9842 c/w 84



XH0147 c/w 84



XH0167 c/w 84



XH0195 c/w 84



XH0528 c/w 84



XH1010 c/w 84



XH1012 c/w 84



XH1049 c/w 84

c/w 84 = Olive, golden orange & black



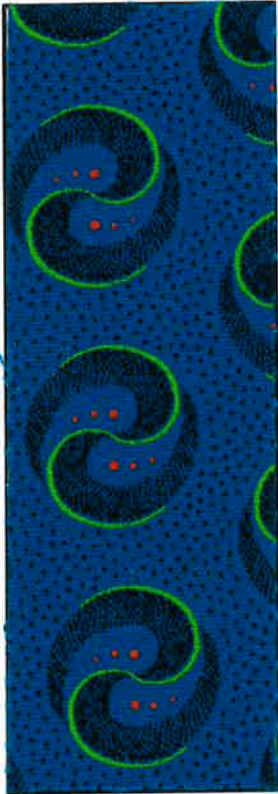
da Gama
TEXTILES

THREE CATS

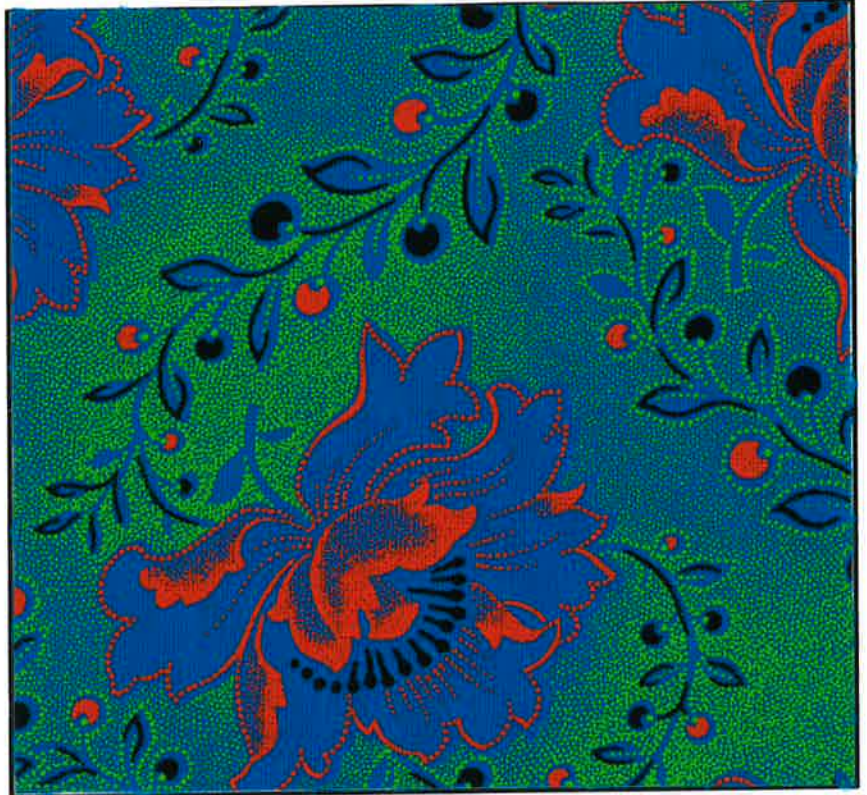
REG^d TRADE MARK



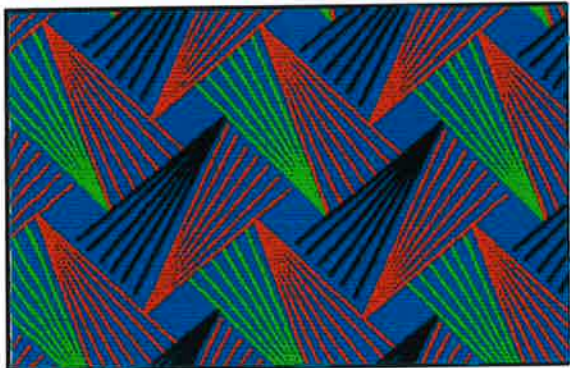
H1286 c/w 271



H1287 c/w 271



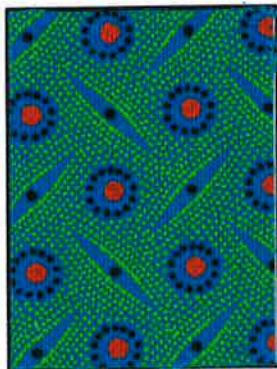
H1288 c/w 271



H1289 c/w 271



H1290 c/w 271



H1291 c/w 271



H1292 c/w 271

c/w 271 = paste apple green, paste orange & black



da Gama
TEXTILES

THREE CATS

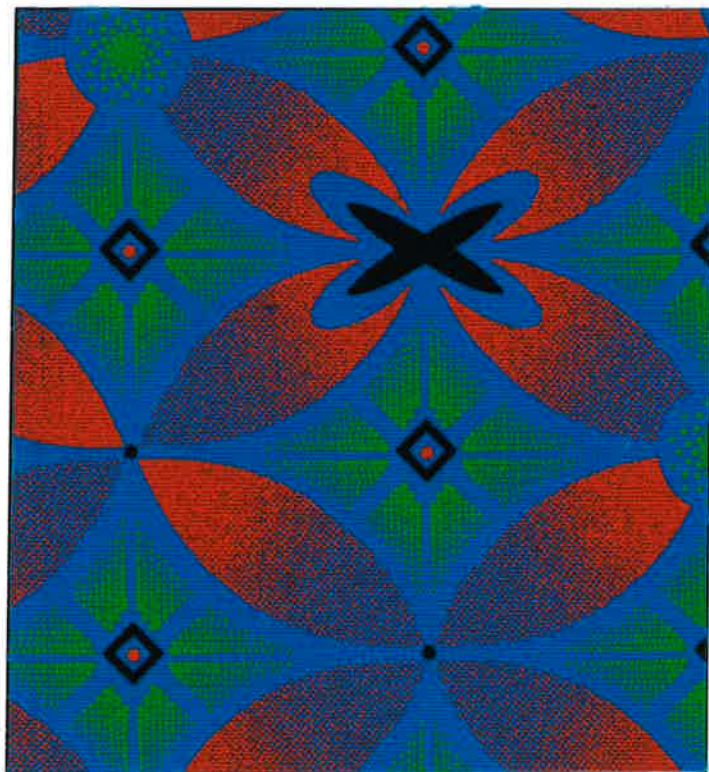
REG^d TRADE MARK



H1293 c/w 271



H1294 c/w 271

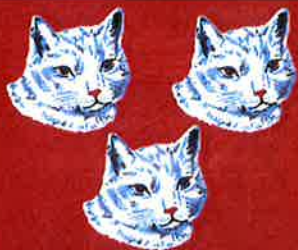


H1295 c/w 271



H1296 c/w 271

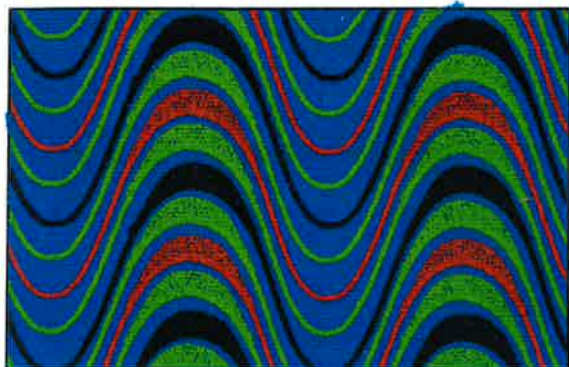
c/w 271 = paste apple green, paste orange & black



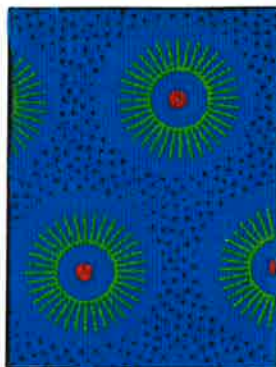
da Gama
TEXTILES

THREE CATS

REG[®] TRADE MARK



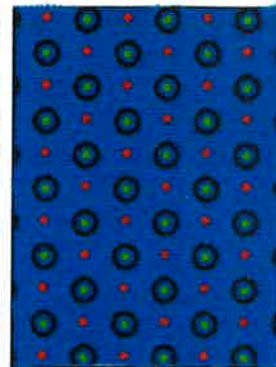
H1297 c/w 271



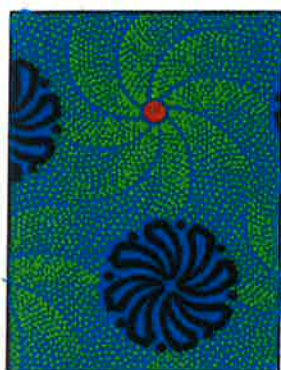
H1298 c/w 271



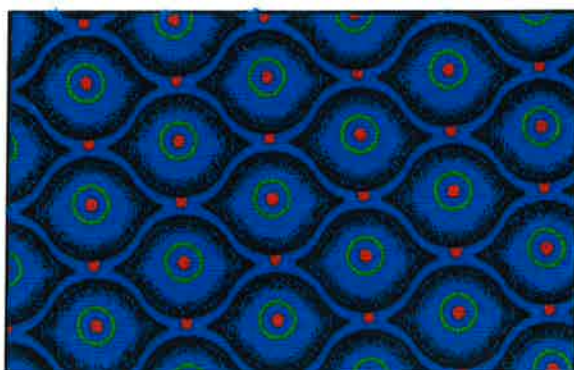
H1299 c/w 271



H1300 c/w 271



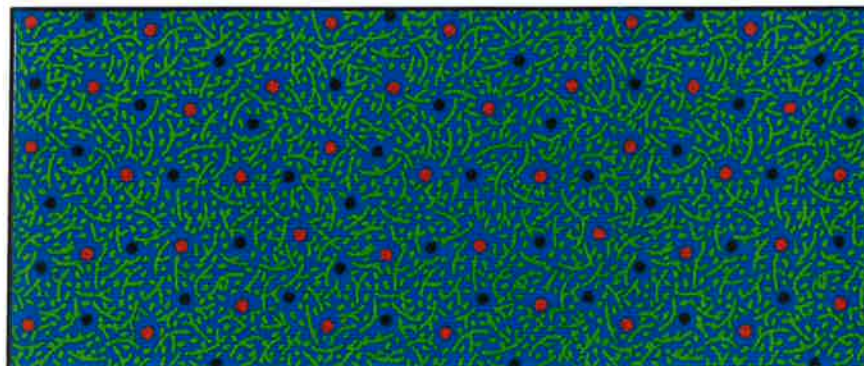
H1301 c/w 271



H1302 c/w 271



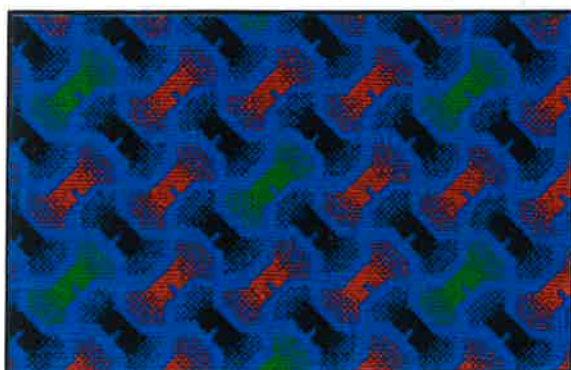
H1303 c/w 271



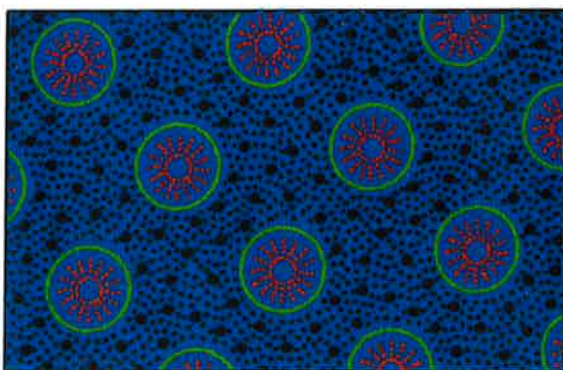
H1304 c/w 271



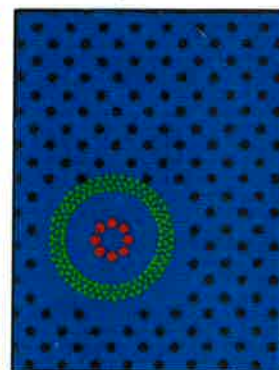
H1305 c/w 271



H1306 c/w 271



H1307 c/w 271



H1308 c/w 271

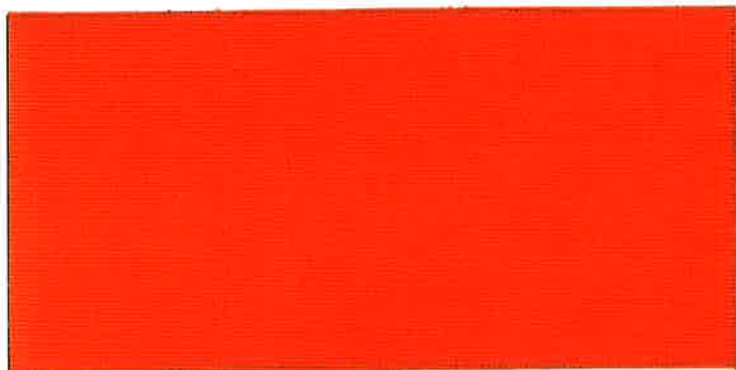
c/w 271 = paste apple green, paste orange & black



da Gama
TEXTILES

THREE CATS

REG^d TRADE MARK



3332 (Orange)



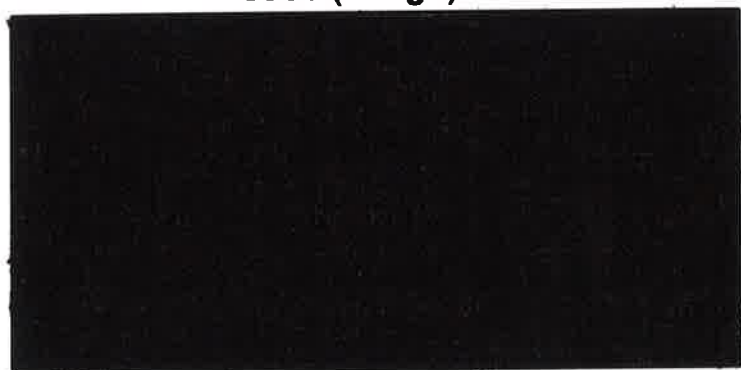
4171 (Red)



6936 (Indigo)



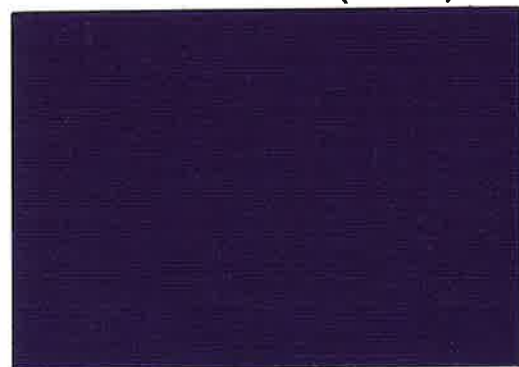
8174 (Brown)



9599 (Black)



41254 (Pink)



41263 (Purple)



50327 (Olive Green)



66574 (Turquoise)

PLAIN DYES